

Subject: K1USN HAPPENINGS 2/24/2022



Hi gang,

Once again, there are many things to report.

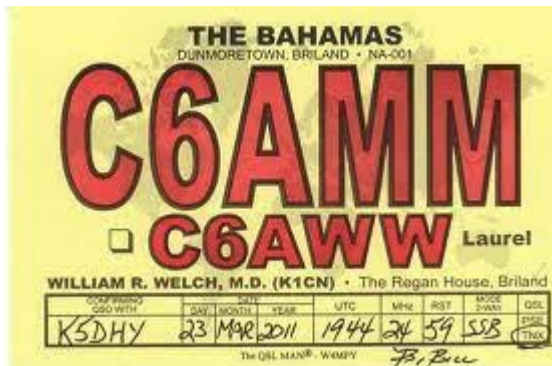
The K1USN clubhouse has officially reopened as of Saturday, February 5th.

As stated previously, due to our tight quarters at K1USN, we feel that it will be necessary for *all individuals visiting K1USN to be fully vaccinated. Mask use will still be required.*

This has been a difficult decision that needed to be made in order to maintain the health and safety of all members and guests. The K1USN Radio Club has always felt that our “No Rules, No Dues” club philosophy is a refreshing alternative to the often spirit-numbing “Robert’s Rules” alternative club philosophies. This is being done to protect ALL of us!

Join us for the K1USN Radio Club net this Saturday @ 9 AM on 145.39 (W1ATD) to say hello, give your weather updates and radio activity reports.

I have some sad news to report today.



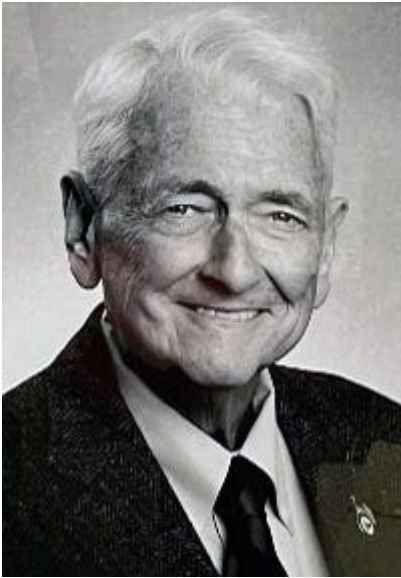
OBITUARY: William Welch, 79, surgical pathologist, treasured Outer Cape sunsets and beaches

https://www.wickedlocal.com/story/provincetown-banner/2022/02/21/william-r-welch-obituary/6878370001/?utm_source=ourcommunitynow&utm_medium=web

William R. Welch, MD, of Osterville, was a husband, stepfather, son, brother, uncle, surgical pathologist, mentor, amateur radio operator, US Navy veteran, comedian, food critic, troublemaker, avid stamp collector and beloved friend to many.

Bill spent his life passionately devoting time to his work, exploring old and new interests, and reading voraciously. He especially enjoyed spending time with his wife Laurel Welch at their home in Osterville, MA, where they lived together for twenty years.

He had an amateur radio station and many comfortable spots for reading. Ever the overachiever, Bill struggled with three different fatal diseases, until he passed away at home on Feb. 15, 2022. He was 79, the same age as his father.



Bill was born in Morton Hospital in Taunton, MA on May 29, 1942, to William J. Welch, MD and Mary V. Welch (née Ryan). Bill's father enlisted in the Army soon after Bill's birth, and when Bill was nearly two years old, his father left for Europe to serve as an army medical officer in World War II, returning 18 months later in 1945.

The family remained in Taunton for the first ten years of Bill's life, where Bill attended St. Mary's School, the same elementary school his parents attended as children. He was fortunate to live next door to great-aunts Mamie and Kay, who spoiled him beyond measure, and inspired his lifelong love for Cape Cod (as well as jelly doughnuts).

In 1954, the Welch family moved to East Longmeadow, MA. Bill attended Classical High School in Springfield, MA, and somehow convinced his classmates to elect him class president three years in a row. At the age of 14, Bill earned his Amateur Radio Extra Class license (which was much more deserved than his driver's license). His original call sign was K1CLN which he later changed to K1CN. While vacationing in Spanish Wells, Bahamas, he was issued the call sign C6AMM, which he cherished.

As a recipient of a Navy ROTC scholarship, Bill excelled at Tufts University and graduated with the class of 1964 with a Bachelor of Science in Psychology. Bill was then commissioned as an Ensign in the US Navy. After sailing with the Navy to Japan, he was stationed at the Portsmouth Naval Shipyard in New Hampshire.

In 1971, Bill earned his medical degree from Duke University School of Medicine, completed an anatomic pathology residency at SUNY Upstate Medical University and became a Diplomate in Anatomic Pathology in 1975 so that he could practice medicine as a surgical pathologist, just like his father.

Bill took a position as a Staff Surgical Pathologist with an emphasis on gynecological pathology at Massachusetts General Hospital from 1975 until 1979. This was followed by a similar appointment at Brigham and Women's Hospital from 1979 until his retirement in 2021. Concurrently, Bill served as a consultant Staff Pathologist at the Dana Farber Cancer Institute and as an Associate Professor of Pathology at Harvard Medical School.

Pathology was one of Bill's greatest passions, and he was always eager to both learn more and educate others. He worked extensively with pathology trainees (residents), patiently teaching them everything he knew, and setting a high professional standard that continues to serve them well in their own careers.

He leaves a legacy of hundreds of doctors who will always treasure his mentorship in both their professional and personal lives. Bill was so proud of his work that he occasionally invited his clueless family members to his lab at the Brigham, where he explained complex medical problems to them while they understood nothing but the extent of his hard work and dedication.

Bill married his longtime sweetheart Laurel Welch, RN in 1995, after they met at Brigham and Women's Hospital in 1984, where she worked as a registered nurse and he as a pathologist. In 1986 they bought a unique sun filled home in Natick, MA.

Vermont was also a special place for Bill and Laurel and they bought a mountain top home with 28 acres of beautiful land in Woodstock, VT. Bill loved caring for the trees and walking in the woods with his golden retriever Chip.

On August 26, 1995, Bill and Laurel married at the Kedron Valley Inn in South Woodstock surrounded by many family members and friends. At this time Bill became stepfather to Laurel's daughter Jennifer. Bill and Laurel shared many interests such as gardening, reading, and traveling to his special island Spanish Wells, Bahamas, where they made lifelong friends.

Bill and Laurel had homes in Truro and Provincetown, MA. The beauty of Cape Cod and its breathtaking sunsets and beaches made the Outer Cape his refuge. Bill and Laurel loved art and visited many art galleries and enjoyed fun filled nights with their many friends.

Another very special place was Cambridge, MA where Bill had a condo and stayed while working at the Brigham and Women's Hospital. He could often be found strolling in Harvard and Central Squares, visiting book stores and restaurants and befriending the staff. Everyone knew his name!

For the last 20 years, Bill and Laurel made a lovely home together in Osterville, MA, on Cape Cod, hosting many friends, forging community ties in the village, and in the summertime, relaxing in Adirondack chairs on their front lawn with their special dog Coco.

Bill had polycythemia vera, interstitial lung disease, and primary central nervous system lymphoma of the brain. Bill fought his illnesses with determination, conquering seemingly impossible odds over many years. He was brave and persevered, living life to the fullest despite numerous and substantial challenges.

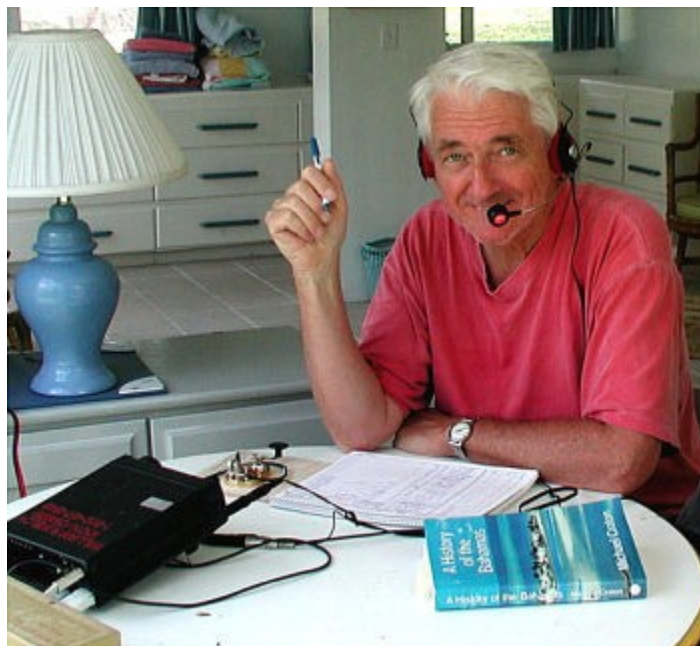
Though Bill couldn't do everything he wanted towards the end of his life, he never disengaged from his hobbies, interests, or friendships, of which there were many. Even at his worst, Bill would receive visits from various family members and friends, take one look, and say "Oh, I have a book for you, just on the table over there, I think you'll really like it."

Often, he was the life of the party, telling stories, irreverent jokes, or teasing his hosts; he was exceedingly honest, and quick to tell you if the turkey you roasted for Thanksgiving was too dry, or (infamously) criticize his mother's sticky bun recipe. Nevertheless, Bill was always content to sit quietly among good company; he could cross his hands over his stomach, lean back in his chair, and smile pleasantly at his siblings' banter, raucous laughter, or interesting conversation. That is, just before leaping back in with a biting comment and easy laugh of his own. Bill was a caring man, and an undeniable presence; he will be greatly missed by the many people who enjoyed his company.

Bill is survived by his wife Laurel Welch, of Osterville MA; his stepdaughter Jennifer F. Tanis and her husband Paul of Kinnelon, NJ, and their children Lyla, Sadie and Ryan; his brothers Lieutenant Colonel (LTC), Ret. Frederick R. Welch and his wife Bonnie of Dallas, TX, their children F. Matthew Welch and Michelle W. Crawford; Kevin L. Welch, MD and his wife Capri of Pensacola, FL, their children William J. Welch and Vanessa C. Welch; and his sister Valerie M. Welch, JD and her husband Robert S. Ovoian, of North Attleboro, MA, and their children Daniel M. Ovoian and Katherine W. Ovoian.

Visitation will be from 10 a.m. to 12 p.m. on Feb. 26, 2022 in the Chapman Funeral & Cremations, John-Lawrence Chapel, 3778 Falmouth Rd, Marstons Mills, MA with a commemoration of his life at 12 p.m. in the funeral home, burial will follow at Mosswood Cemetery.

There will be a luncheon at Wimpy's restaurant in Osterville at 2 pm. In lieu of flowers, please make contributions in Dr. Welch's name to VNA Cape Cod Hospice, 255 Independence Drive, Hyannis, MA 02601 or Boy Scouts of America, 25 Ramopo Valley Road, Oakland, NJ 07436.



Bill Welch, K1CN/C6AMM passed away on February 15th after a long illness.

His detailed notice can be found here -

https://www.wickedlocal.com/story/provincetown-banner/2022/02/21/william-r-welch-obituary/6878370001/?utm_source=ourcommunitynow&utm_medium=web

Services will be this Saturday in Marston Mills.

I first met Bill on the air back in 1995 when we had a contact on the RS-12/13 satellite. The interesting thing about that contact was that I was at my vacation QTH in Newark, VT while Bill was at his vacation QTH in Stowe, VT. We were separated by approx 40 air miles, but our contact took place via the satellite while it was orbiting over the central US.

BTW, RS-12/13 was a CW/SSB HF satellite with 15 meter uplink and 10 meter downlink. After that satellite contact we switched to 75 meters and began a long friendship.

Bill was a member of YCCC as well as the K1USN Radio Club.

73,

Pi - K1RV

P.S.BTW, I found a sound clip of Bill operating a pileup from C6AMM

<https://soundcloud.com/jj5izx199/20140317-0011utc-14262-5khz>



Here is info on several upcoming events sent in by Mindy – KM1NDY.

Hello Hamtastic Friends!

There is quite a batch of radio events coming up...

Saturday, February 26: Ham-Con in Colchester VT

<http://ham-con.org/>

AA1F and I plan on taking a quick run up there (though it will be a bit dependent on the weather on Friday), because, why not?

Saturday, March 12: Scout's Klondike Derby in the Blue Hills

Save the date! There will be more info posted about this, but Tom KC1OCY is looking for volunteers. AA1F and I are all in!

Saturday, May 21: Chester-On-Track 9AM to 4PM, including the W1R Special Event Station

This event is celebrating the railroad heritage of Chester Massachusetts and the Western Railroad - the first mountain and wilderness railroad - at the annual Chester-On-Track Festival. It will take place at the Chester Railway Station and Museum (Chester MA). Some of you may remember this as the site of the "Caboose",

that AA1F and I stayed in Winter Field Day of 2021! We will be setting up at least one radio station and staying on the air for the entire event. If anyone wants to help us out, let me know (we could use it!). Otherwise, it may be a really fun reason to take a trip out to the wild west of Massachusetts! See the attached flier.

Finally!!!! I am thinking about Saturday March 26th for our very own next group POTA and Play Radio Event....Jump in now if you have any issues with this day. We are getting a lot of interest in getting back together in the field soon. It has been a while my friends! So if your outdoor equipment has been collecting dust due to winter, start wiping it off! (Elm Bank is one of the leading possible destinations for this next group POTA!)

If I missed anything, go ahead and let us all know!

Yours as always,

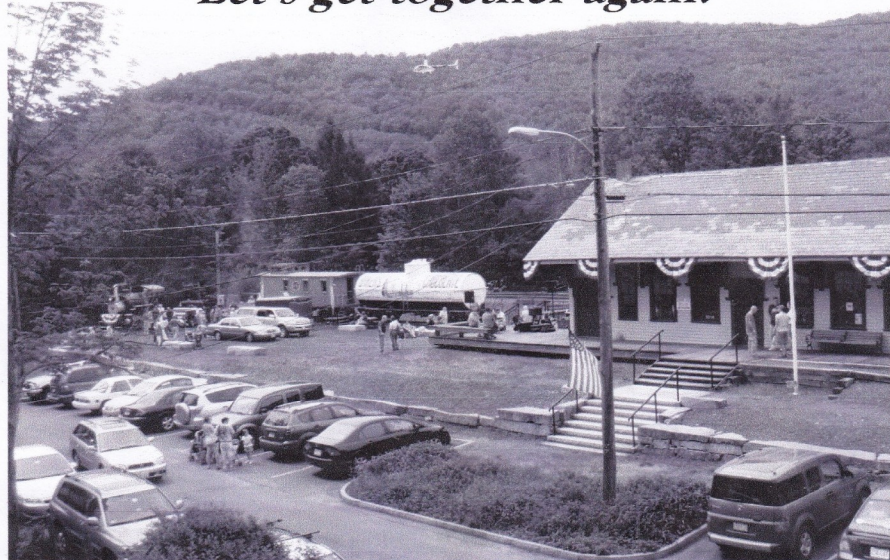
KM1NDY

Chester On Track

Saturday, May 21, 2022 ~ 9AM to 4PM ~ Rain or Shine
OFF ROUTE 20, CHESTER, MA

Encompassing downtown Chester and
the grounds of the *Chester Railway Museum*

Let's get together again!



- PARADE AT 10 AM
- TRAIN SHOW
- DUCK RACE
- CCC CAMP RE-ENACTORS
- PIONEER VALLEY LIVE STEAMERS
- MASS 10TH CIVIL WAR RE-ENACTORS
- STEAM AND GAS ENGINES
- A SERIES OF STONE RR BRIDGES
- ANTIQUE FIRE ENGINE
- LIBRARY MINERAL COLLECTION TOURS
- CHESTER HISTORICAL SOCIETY
- CRAFT FAIR
- HISTORIC U.S. RTE 20 ASSOCIATION
- 1920'S FREIGHT CARS & CABOOSE
- LIBRARY BOOK & BAKE SALE
- CLASSIC CARS, CORVETTES, MODEL T'S
- SPECIAL POSTAL CANCELLATION
- FOOD AND MORE!

The Chester Foundation reserves the right to change the program without notice.

413 ~ 354 ~ 7878

chesterrailwaystation.net

On Facebook at
Chester Railway Station



The Western Railroad Stone Arch Bridges and Chester Factory Village Depot both received the designation as National Historic Landmarks in 2021.

More details about the Klondike Derby that Mindy mentioned:



Activating W1BSA at the Milton Klondike Derby on March 12

The Scouts BSA Great Blue Hill district has expressed interest in having a few hams on hand to provide a demonstration of amateur radio during their Klondike Derby event at New England Base Camp in Milton on March 12, 2022.

We will be operating under the special event callsign W1BSA. (Thank you to Pi K1RV for use of the callsign.)

The base camp is in the Blue Hills State Reserve (K-8402); as such this event could count as a POTA activation.

If you're interested in participating, please fill out this sign up sheet (<https://forms.gle/4ohXtNVLrM8JdUFr6>), including whether you'd like to attend and operate in person or monitor the airwaves for calls from the event. Details are still being worked out with the derby organizers, including the number of operators that they'd like to have attend; please don't be offended if in the end we have more hams interested than can be hosted.

If you have questions, contact Tom KC1OCY (thomas.rm.ulrich@gmail.com, 617-571-8650).

===

Thomas R.M. Ulrich
thomas.rm.ulrich@gmail.com
+1 (617) 571-8650
KC1OCY / WRCU734

"Penetrating so many secrets, we cease to believe in the unknowable. But there it sits nevertheless, calmly licking its chops." -H.L. Mencken

"Better to remain silent and be thought a fool than to speak out and remove all doubt." -
Abraham Lincoln

Great Hill Gang / K1USN Swap Net



Great Hill Gang / K1USN Swap Net

Fridays at 20:00 hours (8pm)

On the Marshfield repeater, 145.39 MHz with PL 67.0

EchoLink NEW-ENG 2 node on 9127 — IRLP Reflector 9127

Net Controllers: NA1XX -Mike & K1UVH -Mike

Listings as of Feb. 23, 2022

FOR SALE

K1NR Gene in Marlboro (K1NR@arrl.net)

— Vintage combination. Johnson Ranger II transmitter. May need some new capacitors. Hammarlund HQ-170 receiver. 3885 mc crystal. \$475 for the combination.

— Radio Shack DX-150 B receiver. \$50

— Hallicrafter SX62a vintage receiver. New In Box. A real collector's item. \$1200

— Collins CP1 crystal pack for Collins KWM-2a, 32S36, etc. With vinyl roll holder. Missing the ham band crystals. \$300

— Swan 350D with digital readout. Very nice condition. \$550 or best reasonable offer.

— Yaesu FR-101 receiver with cw filter. May have some agc issues. Nice condition. \$100 or best reasonable offer.

— Heathkit SB-101 transceiver with HP-23 power supply, speaker and cw filter. \$250 or best reasonable offer.

— Another Heathkit SB-101 transceiver with HP-23 power supply and speaker. No cw filter. \$150 or best reasonable offer.

— Lafayette HA-800 receiver. Needs work, sold as parts radio only. \$75 or BRO.

— Hallicrafters R-46 speaker. \$100 or BRO.

N1JSM Scot in Quincy (jsmackeil@outlook.com)

— 12 volt sealed lead acid batteries, repurposed from medical equipment, 17 AH. \$15 each, 2 for \$25. 2 batteries with sturdy cordura carrying case \$40

— 2 available: Hewlett Packard laptops with Linux mint 20.3, Core I-5, 8 gig memory, CHIRP, other programs possible. \$150 each

— Dell 781 desktop computer, Linux. \$100. Will also throw in a monitor, mouse and keyboard for \$150

— Vintage crystals for 40 and 80 meter bands. 30 available. Tested, all 100% functional. \$8 each

KB1NZZ Chet in Quincy

— 8 available SP-50 portable radios, 3 rack chargers, 20 xtra batteries in their plastic bags. \$200 for the lot

— Motorola repeater racks, GR-500, GR-300, suitcase type available.

KC1EUJ Curt in Marshfield

— 2 available: Icom ICF-121 2 meter transceivers. \$150 for both

— Yaesu FT-2500 2 meter transceiver. \$80

— Astron 35a power supply, no metering. \$75

— Silver Eagle D-104 mic. \$75

— Black base D-104 mic. \$60

— Silver base D-104 mic. \$60

K1KOD Kevin in Duxbury

— Yaesu FT-950, works perfect, with original box. \$400

KC1KWF Wayne in Plymouth

— Icom IC-7300 like new in box. Comes with RT system program and cable. Asking \$900

— Anytone 878 portable. No Bluetooth. Comes with drop-in charger and box. Asking \$150

— Anytone 878 portable with Bluetooth and drop in charger and box. Asking \$200

K1JMA Joe in Plymouth

— Yaesu FT-757 GX all mode HF transceiver 160-10 meters. No mic or power cord. Condition unknown, for parts or repair. \$100 or best offer.

K1VUT Dave in Middleboro

— 10 element beam for 222-226 mHz, M2 model #222-10EZ, asking \$105

NA1R Gary in Bridgewater (w1grc@yahoo.com) or Phone [508-813-6143](tel:508-813-6143)
from [9am-7pm](#)

— JRC JST245 HF+6 mtrs for sale. Plugs in the wall and 150 watts out. Built in tuner and in real nice condition. Asking \$750

K1SEH Steve in Weymouth (K1SEH@ARRL.net)

— Microsoft Surface Pro 2, with 128GB SSD, 4GB RAM, Keyboard Type Cover, Desktop Docking Station (and if I can find them, a car charger and second AC charger). Looking for \$250 for the bundle.

— Unlocked iPhone 7 with extended battery case (which also provide wireless charging). Looking for \$100 for the bundle. Everything is in excellent condition with little to no wear.

NA1XX Mike in North Weymouth (na1xx@aol.com)

— Yaesu FV-101 external VFO for FT-101. In original box. Cosmetically fine, operational condition unknown, for parts, restoration, or vintage collection. \$50 or best offer.

— D-104 microphone, 4 pin connector. From WG1L estate. \$35

— Kenwood TS-50 HF transceiver for parts or repair, TX good, RX needs work. \$50

WB1FWS Frank in Marshfield (fcantelmo@verizon.net)

— Startech Starview SV431 USB 4 port USB 2.0 kvm switch. \$40

— Standard C5718 dual band transceiver, 2 meters and 440. \$100

W1QWT Q in Scituate

—Scanner antenna made by Arrow. JPole configuration, wide band, 150-170 VHF and 450-480 UHF. Excellent condition. \$20

WS1K John in Plymouth (see QRZ for contact info) [10/22]

— LDG AT-11MP automatic antenna tuner. 160-10 meters. With SWR/RF metering. \$125

— LDG Z-100 Plus automatic antenna tuner. Compact size. QRP to high power. 160-6 meters. \$115

AA1DC Sergio in Kingston (via N1EA) (sc_office@yahoo.com, 508-577-1711)
[10/15]

- Rohn 25g tower. Brand new, unused, never been installed. 1 8' flattop section, 10' straight sections. 1 Rohn 25g tower rotator shelf, AS-25-GCH. Includes guy wire hardware. Pick up in Kingston. Worth \$1700 at DX Engineering, asking only \$750.

AJ1L Jeff in Rockland

— Connect System CS-750 UHF DMR HT, 400-470 mHz coverage, includes accessories. \$100

=====
==

LOOKING FOR

WB1EVP Dave in Kingston

— Miracle Whip antenna

KC1FPM Rich in Hanover

— Buckmaster wire antenna

— 4 pin microphone compatible with a TenTec Paragon transceiver

N1SYC Bob in Plymouth [9/17]

— A pair of hamsticks for 20 meters and 40 meters.

Ⓜ

Mike – NA1XX (na1xx@aol.com)

Also for sale @ K1USN



Yaesu FT-101-E HF Transceiver -\$350

- Unmodified: No repairs or damage original example
- Functional, transmits(full output) and receives
- Needs control and switch cleaning, aged parts replaced
- Original Toshiba green band finals
- Still has shipping front panel plastic protector in place
- Original Yaesu heavy duty shipping box

SPECIFICATIONS

GENERAL

Type:	Amateur HF transceiver
Frequency range:	TX: 10-160 m RX: 10-160 m and 10-10.5 / 26.9-27.5 MHz
Tuning steps:	Continuous
Mode:	AM/SSB/CW
Channels/memory management:	
Repeater shift/offset:	No
Power supply:	Mains 12 VDC
Current drain/power consumption:	RX: 600 mA @ 12 VDC TX: Max 21 A @ 12 VDC
Antenna impedance/connector:	50-75 ohms / SO-239
Dimensions (W*H*D):	334*148*284 mm (13.15*5.83*11.18")
Weight:	13.6 Kg (29.98 lbs)
Other features:	

RECEIVER SECTION

Receiver system:	? conversion superheterodyne 1st IF: ? MHz 2nd IF: ? KHz
Sensitivity:	0.3 uV (10 dB S/N)
Selectivity:	AM/SSB/CW: 2.4 KHz (-6 dB), 4 KHz (-60 dB) CW with optional filter: 600 Hz (-6 dB), 1.2 KHz (-60 dB)
Image rejection:	
AF output power/speaker:	? W at ?% distortion / ? ohms
External speaker connector:	

TRANSMITTER SECTION

RF output power:	AM: 80 W (input) SSB: 260 W(PEP input) CW: 180 W (input)
Modulation system:	
FM deviation:	No FM
Spurious emissions:	Less than -? dB
Microphone impedance/connector:	? ohms / ?-pin

MISCELLANEOUS

Manufactured:	Japan, 197x-197x (Discontinued)
Additional info:	
Related documents:	
Modifications:	
Options/Accessories:	- -

Also:



Yaesu YC-601 Digital Counter - \$200

Counter section functional
2nd digit display blanks on 28 MHz (common problem, display driver IC)



The 2022 CQ World Wide 160-Meter Contest is this weekend!

SSB: 2200Z February 25 to 2200Z February 27

Rules - <https://www.cq160.com/rules.htm>

OBJECTIVE:

For amateurs around the world to contact other amateurs in as many U.S. states, Canadian provinces, and countries as possible utilizing the 160 meter band.

EXCHANGE:

RS(T) and state for U.S., province for Canada, and CQ Zone for DX. Note: Zones are location indicators only and do not count for multipliers.

MULTIPLIER:

U.S. States: (48 contiguous states); U.S. District of Columbia (DC) (1)

Canadian Provinces: (14) VO1, VO2, NB, NS, PEI (VY2), VE2, VE3, VE4, VE5, VE6, VE7, VE8 (NWT), VY1 (YUK), VY0. Note VO1 and VO2 are separate due to tradition.

DXCC plus WAE countries: WAE: GM/Shetland (Shetland Islands), IG9/IH9 (African Italy – Lampedusa and Pantelleria Islands), IT, JW (Bear Island), TA1 (European Turkey), 4U1VIC (Vienna International Center), Z6 (Kosovo).

I just received this from the ARRL. They are selling an EFLW kit. It looks interesting and coincidentally, Mike – KC1G just built two EFLW's and will have them at K1USN tomorrow!

Here is the ARRL version:

This antenna kit is perfect for HF and portable operating



Drill. Fasten. Solder.

We partnered with HF Kits to bring you an easy-to-build [four band antenna kit](#): an end-fed half-wave (EFHW) antenna. Perfect for everyone from beginners to experts!

Ease of construction is key with versatility in a variety of installation configurations (sloping, horizontal, L, etc.), no tuner is needed, and this one works on four bands: 10, 15, 20, and 40 meters. Most everything goes into the included weather-proof box and is ready to be [built](#) and deployed by you!

End-Fed Half-Wave Antenna Kit – \$69.95 – Buy Now!

No discounts apply. While supplies last.

ARRL

The National Association for Amateur Radio®

225 Main Street, Newington, CT, 06111-1400 USA

Toll-free: 1-888-277-5289

[Manage Email Preferences or Unsubscribe](#)



Join



Shop



Social



Email

End Fed Half Wave Antenna Kit for 10/15/20/40 Meters

ARRL has partnered with HF Kits to bring you this easy-to-build 4-band antenna kit: an end-fed half-wave (EFHW) antenna. We built it in the ARRL Lab, set it up outside, trimmed the wire for the lowest SWR, and got it on the air. Now it's your turn!

The advantage of an EFHW is the ease of construction, it's versatility in a variety of installation configurations (sloping, horizontal, L, etc.), no tuner is needed, and this one works on 4 bands: 10, 15, 20, and 40 meters. We chose a 250-watt rated antenna so you can comfortably transmit the full output power from many off-the-shelf HF transceivers (typically around 100 watts).

Building the kit is easy. You'll drill, fasten, and solder (a small amount). Most everything goes into the included weather-proof box. Admire, then deploy!

Who needs this antenna?

- **New licensees.** Build something, and you're no longer a licensee...you're a ham!
- **New HF operators...**and anyone seeking an antenna that covers the bands that will become increasingly active with Solar Cycle 25.
- **Every Field Day site**
- **Experts...**because you'll appreciate a quality kit, and you'll end up with a great antenna you can take with you anywhere (think vacation).
- **Radio clubs** seeking a perfect kit for your next project building night!

Specifications

- Bands: 10/15/20/40
- Power rating: 250 W PEP
- Impedance network type: 49:1 with included ferrite toroid

- Wire antenna length: includes 66 feet (approx. length) of strong, flexible, and low weight wire
- Coaxial cable feedline sold separately
- Required assembly tools (you supply): drill and drill bits, pliers, wire cutter, sharp knife or sandpaper, soldering iron and solder, screwdriver, marker
- Assembly instructions: arrrl.org/end-fed-half-wave-antenna-kit

Parts (included)

Impedance network

- P65 enclosure 100 x 100 x 55 mm with weather sealant and screws 4x
- Toroid Amidon FT240-43
- Toroid mounting plate
- Stainless steel M3 6mm screws 4x
- Stainless steel M3 split lock washer 4x
- Winding wire 1.0 mm
- Cable ties 8x
- 100 pF capacitor 2kV
- SO-239 chassis mount connector
- Stainless steel M3 bolt 12mm 4x
- Stainless steel M3 nut 4x
- Stainless steel M3 washer 4x
- Stainless steel M3 tooth washer 4x
- M3 cable lug
- M5 cable lugs 2x
- Stainless steel (A4) M6 strain relief
- Stainless steel M6 nut
- Stainless steel M6 washer
- Stainless steel M6 lock washer
- Stainless steel M5 bolt 25mm 2x
- Stainless steel M5 wing nut 2x
- Stainless steel M5 nut 4x
- Stainless steel M5 washer 4x
- Stainless steel M5 tooth lock washer 4x
- Stainless steel M5 split lock washer 4x

Antenna

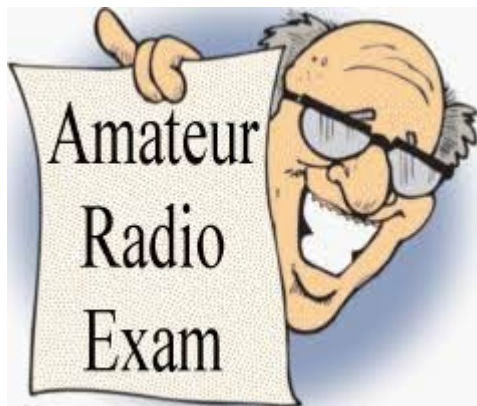
- 66 feet (approx. length) of strong, flexible, and low weight wire
- 2x Stainless steel cable clamp
- 1x end insulator
- 1x cable lug 5mm
- 1x Heat shrink sleeve for cable lug

Henry - K1WCC sent along this photo of the button he wore at his very first Hamfest!

What was HF propagation like back then?



K1USN VE Exam Team



Steve - W1OD says that he is looking for candidates to sign up for the March 12th exam session at BEMA HQ on Sunset Lake.

Contact Steve (w1od@arrl.net) ASAP if you wish to take an exam on Saturday, March 12th because space is limited!





Newly elected ARRL New England Director and Vice Director to visit the K1USN Radio Club **NEXT** Saturday, March 5th.



Time for a Classical Music Interlude

2CELLOS - Highway To Hell featuring Steve Vai



<https://www.youtube.com/watch?v=qfGggAGITw>

Here is a very interesting report from Thaire – W2APF about his recent “DX-pedition” to Montserrat as VP2MDX.



Under the Volcano

A DXpedition to Montserrat

For February of 2020 my wife and I had escaped the ice and snow of northern New Hampshire and rented a house in Fuertaventura, the Canary Island closest to Africa. I brought my trusty KX3, KXPA100, a Delta Loop and an 88’ doublet and was ready to spend a month working the world as EA8/W2APF! The weather was a lot better than New Hampshire’s; I was interesting DX and the local restaurants were great. The only big negative was the seasonal “la calima” or sandstorm that carried red sand from the Sahara across the Canaries. During these storms visibility was down to 10’ and everyone stayed in their houses.

Near the end of the month our Son-in-law, an Infectious disease Physician at Massachusetts General Hospital, began to sound the alarm about this new thing called Covid. He advised getting home as fast as possible. That warning was prescient as Las

Palmas shut down a hotel and quarantined 1000 guests for this new disease brought to the Canary Islands by some visiting Northern Italians.

Our plans had called for a three day stop in Madrid on the way home to visit the great museums. Instead, we hid in our hotel room and ordered room service until we could get to a plane home. Arriving in New Hampshire we went directly into quarantine and luckily had not contracted anything nor brought anything home with us.

Fast forward through two years of masking, vaccinations, boosters and a lot more radio time than even I had dreamt possible, and we were both looking for a change of scenery. We also wanted to get away from Winter in New Hampshire. Debbie had a new knee, and I had a new carbon fiber and titanium leg (thanks to an accidental fall while dismantling a tower) so neither of us was interested in skiing or any other winter activity. The question was where to go safely with Covid still an issue. In August we settled upon the Island of Montserrat, VP2M. We had been there in 1995 just a few months prior to the Volcano starting to act up and had loved the island for its beauty and very friendly local population. They had locked down very successfully, had begun a successful masking protocol and had reasonable success with Vaccinations. Through February of 2022 they had had only two deaths due to Covid, only 164 cases in total. We were safer there than in New Hampshire! As of the 19th of February, 2022, the day we returned home, they had zero active cases of Covid on the island!

We found a house that looked to be both comfortable and very radio friendly on a promontory called Garibaldi Hill. It had a clear takeoff in all directions and space for antennas. The big problem was that the island was still closed to visitors. We quickly found a work around! Montserrat had a "Remote Worker Program". They were admitting folks who could come for longer periods and work remotely. The island has great internet, much better than New Hampshire's rural areas and the program enabled the island to replace some of the income lost by the tourist trade. It entailed us getting an interview and background check by our local Sheriff, providing proof of income, health insurance, vaccination, a place to live and a job description. I explained that I

was planning on doing research into worldwide HF radio propagation using simple wire antennas. I applied for and received the callsign VP2MDX and the Remote Worker Stamp.

We had our permit to travel, our airline tickets and a house to rent. My next job is for equipment and antennas. I have traveled the world for years pre-Covid with my KX3 and had just received the 12-year-old wonder back from Elecraft after a tune up. My KXPA100 amp had always worked well and with a PX3, a Begali Adventurer Paddle and a PS I was ready to go, all I needed was to settle on antennas. I had read a lot about Hexbeam antennas and saw a lot of pluses over the 88' doublet I usually traveled with. The big problem was weight and set up. I even planned a lunch with Mike Traffie, one of the early pioneers with Hexbeam antennas. Mike assured me that the design would meet my needs but sadly he had no parts left to construct one. I checked out others on both sides of the Atlantic and found that they were either too heavy, too expensive or unobtainable in time for our trip.

In researching Hexbeams I came across a YouTube video of Jason, KC5HWB, putting up a Hexbeam made by BuddiPole. It was easy to assemble, weighed less than 7 pounds and paired very well with a Mastwerks mast and tripod. It all fit nicely in a snowboard carrier made by SportTube and made the airline weigh-in at under 50 lbs. including 75' of coax and a 12-meter Spiderbeam mast for my 88' doublet to use for 30, 40 and 80! The only problem was that they were not yet available for sale. I have known Budd Drummond for many years both through BuddiPole and his many DXpeditions to the Caribbean. I found out that the company was now being managed by his son Chris. I took a chance, emailed Chris and explained my plans for a trip to Montserrat. I asked if there was any chance of getting one of his Hexbeams in time for the trip and he graciously let me order one along with the Mastwerks mast and tripod. SportTube supplied the case and it all arrived about three weeks before our departure. I had wanted to do a dry run of the assembly process but the weather in New Hampshire refused to cooperate.



My entire Elecraft station travels in a Pelican case that I take as carryon. The SportTube held the antennas and was checked. I also brought my KX2 for radio on the beach with a new AX-2 17-meter whip. Even though we had 8 canceled flights in 8 hours we managed to get to Antigua an hour early with all our luggage and equipment. The 15-minute flight to Montserrat was in a 6-passenger plane and the only way to enter with Covid restrictions. A taxi brought us to our house, our host did grocery shopping, and we went into quarantine for 5 days.

We arrived on Saturday evening and by early afternoon on Sunday the antennas were up, and an operating position was established on the deck overlooking the pool, lush green vegetation and the blue waters of the Caribbean. Nevis and Redonda were just 30-40 miles away. On a few days pods of humpback whales swam past the island. We could hear the surf at Isles Bay beach just 400 yards below the house. It was the perfect Covid and winter get-a-way. The island was so safe that we left the station set up all month, protected from the rain and looking out at the rainbows we saw nearly every day. By 4:00 PM local (2000 UTC) I was ready to check into the Collins Collectors net and got to chat with old friends, Michael, WOJAM, and David, K2DP. I am a regular net control on this net from New Hampshire using my Elecraft K4D, KPA1500 and M2 log periodic at 60'. The reports I got showed that I was just as strong with 100 watts

and the Hexbeam. So good, in fact, that I operated as net control on two other Sundays.



That first QSO led to over 1300 more. About 500 on CW and over 800 on SSB. I had not expected that Montserrat would be as sought after as it was. There are relatively few local Amateurs active on HF and with Covid not many other operators had visited. I enjoy CW and at home operate CW about half the time. On Montserrat every time I went on CW I got spotted immediately by W3LPL's skimmers and would be deluged with calls. I tried working split and it helped some, but my logging skills and lack of computer rig control made it very difficult. Next year I will be ready with a new logging program, computer control of the rig and with a lot more CWT's under my belt I hope to better handle the pileups. In all, I worked every state but Hawaii, 6 of 7 continents, 66 DX entities and had the thrill of giving an ATNO to a lot of folks. The propagation gods smiled and 10, 12, 15 and 17 were great. Best DX was VK9 on 40 m CW and TZ4 on 10 m cw. I got Jacky, ZL3CW on 10 m CW and SSB as well as Roger, ZL1XR on 15 m.

The BuddiPole Hexbeam and the Elecraft KX3 station made an awesome combination. I almost forgot to mention one of the great touches on the MastWerks mast and tripod.





WHITMAN AMATEUR RADIO CLUB

Amateur Radio Training



Whitman Amateur Radio Club

The next license class we will be offering will be for the Technician (beginner) amateur radio license. Ross W1EKG will be starting the class on March 15th, with classes on Tuesday and Thursday nights from 7 to 9 PM at the Whitman Police station.

If you are interested, please email WARC.Training@gmail.com. A VE exam session will be offered at the end of the class.

For questions or to sign up for the class,
please

Email Ross W1EKG at
bavarianradio@comcast.net or
warc.training@gmail.com or call Ross at 781-
447-9104



On Tuesday morning I saw this posting on the YCCC email reflector and mentioned it via text to a few of the guys.

ARISS radio contact is scheduled for February 23, 2022 at 10:31 am EST may be heard by listeners in New England

From: [AC1EV](#)

Date: Tue, 22 Feb 2022 21:51:03 EST

Hi YCCC,

On Wednesday, February 23rd, at 10:31 EST, there is a direct ARISS contact planned between students at the Sussex County Charter School for Technology in Sparta, NJ, and Astronaut Mark Vande Hei, <<https://www.qrz.com/db/KG5GNP/>> KG5GNP on the International Space Station.

The astronaut's downlink may be heard by listeners in New England as the satellite passes overhead. The downlink frequency for this contact is

145.800 MHZ.

You can view the Livestream of the contact at the following link:

<<https://youtu.be/dQpyK-uyzPU>> <https://youtu.be/dQpyK-uyzPU>. The Livestream will start at 9:50 AM EST.

Several Nashua Area Radio Society members, Fred,

<<https://qrz.com/db/AB1OC/>> AB1OC, Vince <<https://www.qrz.com/KD2TMJ/>> KD2TMJ, and Vince <<https://www.qrz.com/KD2VLQ/>> KD2VLQ have worked to make this contact happen.

Here is the ARISS press release:

February 21, 2022-Amateur Radio on the International Space Station (ARISS) has received schedule confirmation for an ARISS radio contact with astronauts. ARISS is the group that puts together special amateur radio contacts between students around the globe and crew members with ham radio licenses on the International Space Station (ISS).

This will be a direct contact via amateur radio between students at the Sussex County Charter School for Technology, Sparta, New Jersey and Astronaut Mark Vande Hei, amateur radio call sign KG5GNP. Students will take turns asking their questions. Local Covid-19 protocols are adhered to as applicable for each ARISS contact. The downlink frequency for this contact is 145.800 MHZ and may be heard by listeners that are within the ISS-footprint that also encompasses the radio relay ground station.

Amateur radio operators, using the call sign KD2YAQ, will operate the ham radio ground station for this contact.

The ARISS radio contact is scheduled for February 23, 2022 at 10:31 am EST (New Jersey), (15:31 UTC, 9:31 am CST, 8:31 am MST and 7:31 am PST).

I have listened in to some past contacts and even though you can only hear the downlink it is worth it. I hope some of you can listen in.

73,

Jon Turner (AC1EV)

President

Nashua Area Radio Society

Dayton HamventionR 2019 Club of the Year

AC1EV@ARRL.NET <mailto:AC1EV@ARRL.NET>

Visit the club Website - <<http://www.n1fd.org/>> <http://www.n1fd.org>



Well, it turns out that Mike – KC1G was at the Holbrook Sportsmen’s Club range and he had his two meter HT ready. He recorded the ISS transmissions and it is pretty cool!

Tnx, Mike!

Awesome! Not sure if you can play my clip. Could not hear the uplink, as expected.

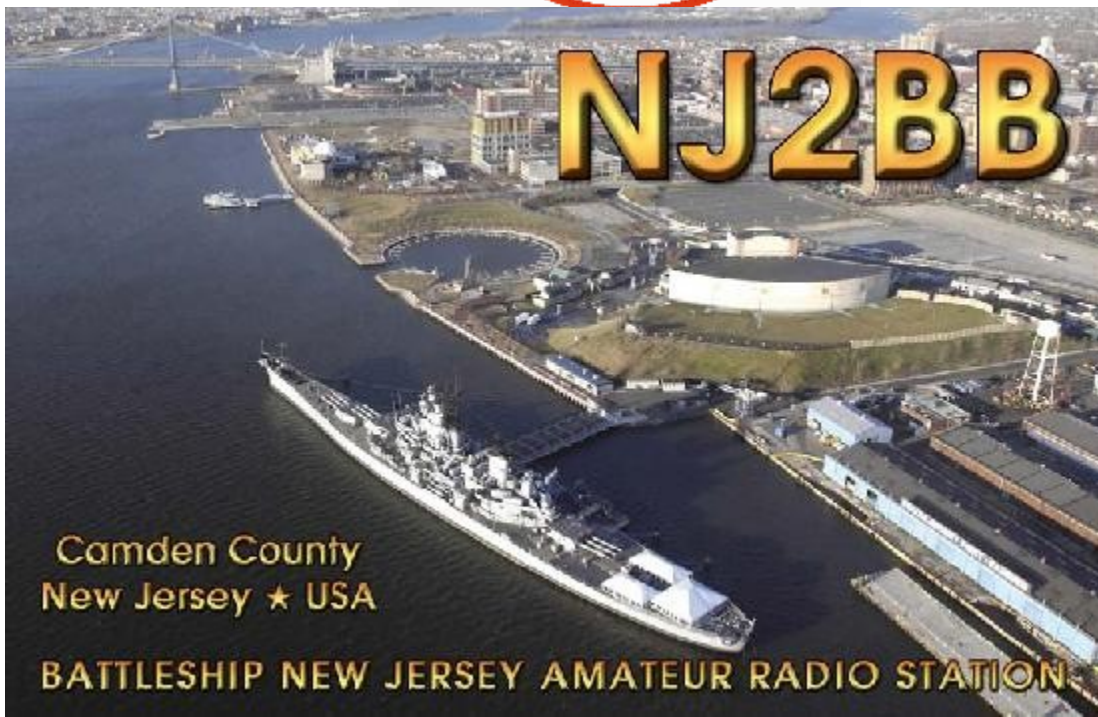
The occasional gunshot you hear in the background is from the Holbrook Sportsmen’s Club, not the streets of Chicago.

Mike Pilla
mapilla@me.com

mapilla@icloud.com



ISS MP3



MUSEUM SHIPS WEEKEND 2022

0000Z June 4, 2022 to 2359Z June 5, 2022

K1USN is already signed up to participate again in MSW. We plan a full scale activation and will be looking for operators (CW,SSB & FT4/8) as we get closer to June. Be sure to mark your calendars!

The USS Laffey is one of the many historic vessels that participates in Museum Ships weekend.



52 Kamikazes Attack Single Destroyer USS Laffey, 1945 - Animated

Fascinating story with more details here -

<https://www.youtube.com/watch?v=Us-AvuSg9Fc>



Watch "New breakthrough could finally solve the mystery of missing flight MH370 | 60 Minutes Australia" on YouTube

Tnx to Mike - WA1MAD for sending this along.

******Alert**** Ham Radio connection?**



Subject: Watch "New breakthrough could finally solve the mystery of missing flight MH370 | 60 Minutes Australia" on YouTube

<https://youtu.be/Jq-d4Kl8Xh4>

Mike Davis WA1MAD

Time to sign up for the March Expo. (I already registered!)

<https://www.qsotodayhamexpo.com/>

QSO Today Virtual Ham Expo

Returns

March 12th and 13th 2022



Whether you're a seasoned DX chaser or a "wanna be" DXer, then we've got you covered at the upcoming March 12-13 QSO Today Virtual Ham Expo, the World's first and largest on-line amateur radio convention. Join us from the comfort of your shack, office, or anywhere with an Internet connection.

Here is a sample of the outstanding DX presentations along Live Q&A to make sure that all of your amateur radio questions get answered:

- Mike Crownover AB5EB, Erwann Merrien LB1QI, and Bill Straw KO7SS will discuss their exciting plans as they attempt to operate on Bouvet Island, in November 2022. In their presentation, [3YOJ: The Bouvet DXpedition](#), hear about their plans to land on Bouvet and make contact for 10 days in November 2022..
- Carl Luetzelschwab, K9LA, will give an [Update on Cycle 25](#) to guide us on what to expect as Sunspot Cycle 25 starts to rise and ionospheric propagation begins to improve. Hear about the implications of this for all ham radio operators.

- [Chasing DX During A Contest](#) is the subject of a presentation by Bill Salyers, AJ8B. Bill will provide best practices, tools, and techniques to increase your chances of logging DX targets.

Join us at the QSO Today Virtual Ham Expo for these and many more presentations on March 12-13, 2022. ARRL, the national association for Amateur Radio® in the United States, is a QSO Today Virtual Ham Expo Partner. FlexRadio is the Expo's Platinum Sponsor and Elecraft is the Gold Sponsor.

Ham Expo information: <https://qsotodayhamexpo.com>

Expo Tickets: <https://qsotoday.vfairs.com/en/register-form>

See you at the Expo!

About the Expo

Amateur radio is like a big circus. It has its main tent with three rings in the center. In those rings could be Contesting, DXing, and Rag Chewing. However, **amateur radio now has a "midway of a thousand smaller tents"** according to Eric Guth, 4Z1UG, founder of the QSO Today Virtual Ham Expo, and host of the [QSO Today Podcast](#), a interview program featuring the most interesting amateur radio operators. It is exactly this midway that the "Expo" was founded to explore.

August 2021 had over 90 presentations in 8 tracks of amazing amateur radio content.

The QSO Today Virtual Ham Expo returns on March 12th, 2022 and has

become a twice yearly event. We hope to see you there!


Thank you for your support!

73,

Eric Guth, 4Z1UG

[QSO Today Virtual Ham Expo](#)

[QSO Today Podcast](#)

 Share

 Tweet

 Share

[Click here to register for the next QSO Today Virtual Ham Expo](#)

[QSO Today Virtual Ham Expo Main Website](#)

A QSO Today Partner



ARRL The National Association for
Amateur Radio®

Our Platinum Sponsor



Our Gold Sponsor



4470 W Sunset Blvd #92485, 90027, Los Angeles, United States

You may [unsubscribe](#) or [change your contact details](#) at any time.

Just thought that I should remind you again about the twice weekly K1USN SST's

K1USN SST
Please join
us!

Members of the K1USN Radio Club, who are also members of the [CW Operators' Club \(CWops\)](#), run a one-hour *slow speed* CW “contest,” called the SST.

For those who prefer a more leisurely CW pace or are new CW operators or contesters, this just might be what you're looking for!

SST UTC times do not change

Fridays 20:00-21:00 UTC: 3-4 pm EST

Mondays 00:00-01:00 UTC: 7-8pm EST Sunday



I want to remind everyone that we have resumed our regular K1USN Saturday morning breakfast gatherings. We meet @ 7 AM at the Mad Hatter Restaurant on rte 53 in Weymouth overlooking Whitman's Pond.

After breakfast we usually open up the K1USN club building by 8:30 AM and remain open (w/ free Starbucks coffee!) until noon. **K1USN reopened on Saturday, February 5th!**

Of course, whenever we are open, we still have free (Starbucks) coffee every Saturday!

**KEEP
CALM
AND
ENJOY
HAM RADIO**

Here is a list of some of the activities that K1USN members are involved in.

Now we have a number of regular activities which include:

Daily EM2MN two meter traffic net on the W1BOS - Boston repeater (145.23 88.5 Hz) @ 8 PM EST

<https://ema.arrl.org/eastern-mass-two-meter-traffic-net/>

Monday evening @ 7 PM EST 2 meter SSB net on 144.244 USB; immediately followed by CW net.

Friday evening two meter Swap Net on the W1ATD - Marshfield repeater (145.39 67 Hz) *also via EchoLink NEW-ENG 2 on 9127, IRLP reflector 9127 @ 8 PM EST*

Saturday morning two meter net on the W1ATD - Marshfield repeater (145.39 67 Hz) *also via EchoLink NEW-ENG 2 on 9127, IRLP reflector 9127 @ 9 AM EST*

Sunday evening 7 PM EST (Monday 0000 UTC) and **Friday afternoon** 3 PM EST (2000 UTC) Slow Speed CW "Contest" on 160, 80, 40, 20, 15 & 10 meters (details @ www.k1usn.com/sst)

Sunday afternoon 6 meter FM net on 52.525 FM @ 4:30 PM EST

Monthly **Tuesday evening** 7:30 PM EST Zoom session focused on various Ham Radio topics which are archived on our K1USN Radio Club YouTube channel.

<https://www.youtube.com/channel/UCeqnvJP92umejHhmAiUFW5g>

Monthly in-person gatherings on the second **Saturday morning** of every month in the parking lot atop Great Hill in North Weymouth. More details available from Mike – K1UVH (mikeantenna@verizon.net) Arriving around 8 AM EST until ?

Please send me any additional activities you would like to list.

That's it for now, folks!

I hope to hear some of you on the SST's this weekend (Friday & Sunday) or on the Saturday two meter net @ 9 AM EST on the Marshfield W1ATD 145.39 (67 Hz) repeater.



73,

Pi - K1RV / K1USN

k1rv@arrl.net

