



**2022 FIELD DAY
BRAZOS BEND
STATE PARK
6-25-22**





The man with the plan





20 Meter Setup SSB & FT8





Contact Board











Participants

Jeremy **KG5PYY**

Kristy **KI5RLZ**

Stephen **W2WF**

Anthony

Kevin

Ralph **KE5HDF**

Barry **KG5IRR**

Mark **WB5ANN**

Mike **KI5MIK**

Bob **KI5PZT**





There was a club meeting
and testing at Transtar



No multipliers for the heat 😊

Band/Mode QSO Breakdown: Do not list GOTA QSOs in this section.

Band	CW		Digital		Phone	
	QSOs	Pwr(W)	QSOs	Pwr(W)	QSOs	Pwr(W)
160m						
80m						
40m					16	20
20m			10	20	24	100
15m						
10m						
6m						
2m						
222						
432						
Other						
Satellite						

2022 Field Day Entry

You can update your Field Day Entry by modifying the form entries below and resubmitting. You can access a help page by clicking on [?](#) next to an item on the form. **Notes:** You do not

Call Used [?](#) GOTA Station Call [?](#) Location [?](#)

Club or Group Name [?](#) (Type name to find and then select in existing list, or type complete name not on list.)

Number of Participants [?](#) Number of Transmitters in simultaneous operation [?](#)

Entry Class (check only one):

- A. Club or non-club group portable [?](#)
- B. 1 or 2 person non-club group portable [?](#) List of calls of operators:
- C. Mobile [?](#)
- D. Home station commercial power [?](#)
- E. Home station emergency power [?](#)
- F. EOC station [?](#)

Power Source (check all that apply):

Generator Commercial mains Battery Solar Other (list)

Power Multiplier (check only one): [?](#)

- 5 watts or less and battery powered = 5x
- 100 watts or less = 2x
- More than 100W (will not be listed in the results)

Bonus Points claimed: Check each box as appropriate and include required proof of points with your submission. All bonus points will be verified at ARRL HQ and added to your score.

- 100% emergency power [?](#)
- Media publicity [?](#) Upload documentation: No file selected.
- Public location [?](#)
- Public information table [?](#) File [INFO_TABLE.jpg] previously uploaded: No file selected.
- Formal message to ARRL SM/SEC [?](#) Upload documentation: No file selected.
- W1AW Field Day message [?](#) Upload documentation: No file selected.
- Formal messages handled [?](#) — No. Upload documentation: No file selected.
- Satellite QSO (automatically determined)
- Natural power QSOs completed [?](#) File [SOLAR2.png] previously uploaded: No file selected.
- Site visit by invited elected official [?](#)
- Site visit by invited served agency official [?](#)
- Educational activity [?](#)
- Youth participation [?](#)

Call Used: KE5TRB	GOTA Station Call: (NONE)	
Participants: 20	Club/Group Name: Oak Forest A	
Power Source(s): Battery, Solar		
Power Multiplier: 2X		
Preliminary Total Score:		770
Bonus Points:		
100% emergency power		200
Public location		100
Public information table		-100
Natural power QSOs completed		-100
Site visit by invited served agency		100
Entry submitted via web		50
Total bonus points		650
Claimed score QSO+mult		120

ARRL Soap Box Entry

KE5TRB [photo/doc]



It was a hot weekend but I had lots of fun! We had 20 people show up to Brazos Bend State Park (45 minutes drive from Houston). Visitors included 2 that took the Tech exam that morning (they passed) , 2 park rangers, and the ARRL South Texas traffic manager.

We cut our operations class to 2A because several of our club members sent word they would not be at the park DUE TO THE FORECAST OF 102F WEATHER ... Health concerns from heat or illness and traveling for work. They did the right thing Safety comes first!! Members policed each other for hydration and signs of heat (excessive sweating or flushing). We passed out fluids, bananas, water melon.

We helped some folks get on the HF airwaves for the first time or the first time in a long while. Mark and Steve were great mentors helping the newcomers succeed. 100% solar/battery using vertical antennas to avoid damage to trees and one antenna was made from TENT POLES.

Our contact list is not real long ... During daylight hours 20m was upset and 40m was about dead. There was a geomagnetic storm on Saturday that really stirred up the ionosphere.

The Rangers were interested in amateur radio as a backup when the park radio system or phones are down. The fellows that just took the Tech exam need amateur radio for the emergency relief group the work with.

73 KE5HDF

Park Map

TEXAS PARKS & WILDLIFE **Brazos Bend** State Park

Please Note:

- CHECK OUT time is 2 p.m. or renew permit by 9 a.m. (pending availability).
- Public consumption/display of open alcoholic beverage container prohibited.
- Maximum of eight people per campsite. Guests must leave the park by 10 p.m. Quiet time is from 10 p.m. – 6 a.m.
- Excess parking fee is required at campsites with more than two vehicles (including trailers).
- Trash dumpsters are conveniently located on all camping loops. Campsite must be kept clean.
- GRAY WATER AND BLACK WATER MUST BE DISCHARGED ONLY AT DUMP STATIONS.
- Only one unit per site is permitted to hook up to utilities.
- Pets must be kept on leash. Please pick up after them.
- Valid permit is required on windshield of each vehicle in park. All vehicles are to remain on pavement.
- Numbered sites for overnight camping only. NO PICNICKING.

Caution:
Please DO NOT feed wildlife.
Feeding of wildlife is prohibited.
Venomous snakes exist in park.

Visit www.bbspvo.org for weekend program schedule, activities and guides, animal and plant checklists, school group information, special events and information about our volunteer organization.

Alligator Etiquette:

- ABSOLUTELY DO NOT feed or annoy the alligators.
- Keep pets on a leash no longer than six feet. Do not throw objects in water for your dog to retrieve.
- Keep at least 30 ft. from an alligator – do not assume they're slow-moving.
- Do not swim in or wade into any water in Brazos Bend State Park.
- If an alligator goes after a fish you have caught, cut the line and let the alligator have the fish.
- Avoid any alligator sunning itself in the middle of the trail or lake bank.
- Stay clear of grasses, twigs and/or soil near the side of a trail. It may be a nest and the mother alligator is probably close by guarding it.
- If an alligator opens its mouth and hisses, you have come too close. Retreat slowly, make no quick moves. Keep your eyes on the alligator.



Entrance to backcountry trails: Foot traffic ONLY. No bicycles permitted. Backcountry trails map available at park headquarters and trailheads.

Please wear helmet when bicycling in park.

Creekfield Interpretive Trail:
Foot traffic only - .5 mile paved loop.
Self-guided booklet available at headquarters and Nature Center.

Visit Our Gift Shops

At the Park Headquarters, Nature Center and George Observatory. Ice and snacks available at Nature Center shop. Firewood available at Park Host sites.

Park Reservations
(512) 389-8900
www.tpwd.state.tx.us

Legend:

- ★ Headquarters
- 🛍 Gift Shops
- 🛏 Rest Rooms
- 🚿 Showers
- 🏕 Sponsored Youth Camp Area
- ⚡ Water/Electric
- 🗑 Dump Station
- 🏠 Residence
- 🏠 Screened Shelter
- 🎪 Amphitheater
- 🏢 Banquet Hall/ Conference Center
- ♿ Handicapped Accessible
- 🚶 Interpretive Trail
- 🚲 Bike Trail
- 🚶 Hiking Trail
- ☎ Pay Phone
- 🍷 Picnic Area
- 🏠 Group Picnic Shelter
- P Parking
- 🎣 Fishing Pier
- 🎡 Playground
- 🛠 Maintenance
- 🌿 Nature Center
- 🦋 Wildlife Viewing
- 🗑 Trash Container
- ⋯ Unimproved Trail
- Paved Trail
- Stabilized Trail
- 🌾 Marsh

21901 F.M. 762
Needville, Texas 77461
(979) 553-5101

In accordance with Texas State Depository Law, this publication is available at the Texas State Publications Clearinghouse and/or Texas Depository Libraries.
© 2005 Texas Parks and Wildlife Department PWD MP P4504-110L (8/05)

TOYOTA Proud Sponsor of Texas Parks and Wildlife Programs

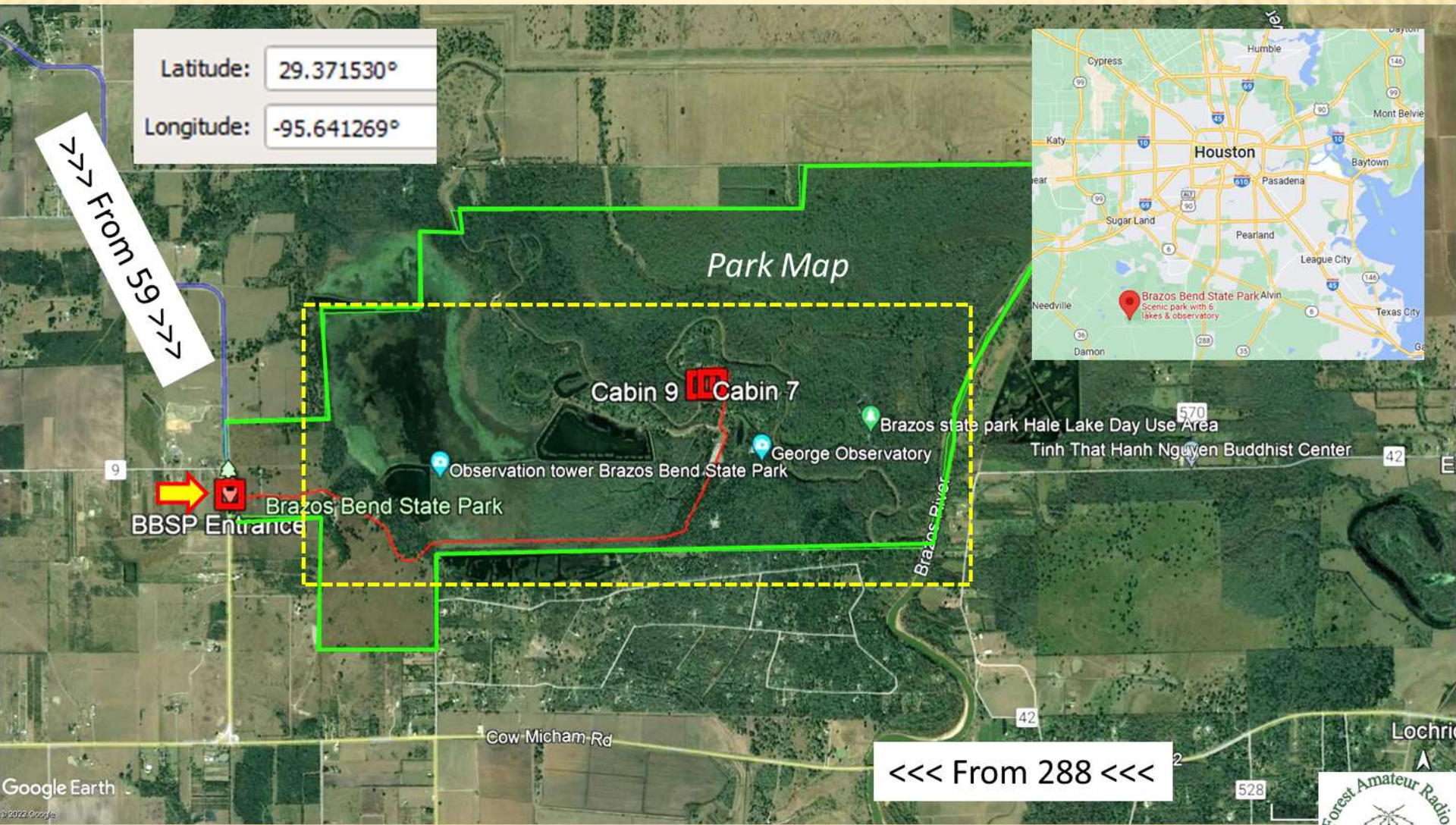
<https://tpwd.texas.gov/state-parks/brazos-bend>

<https://ofarc.org/>



Oak Forest Amateur Radio Club Field Day Saturday June 25 and 26 2022

Brazos Bend State Park



Dit Dit

