

Radio Set SCR-624 is a VHF ground-air communication set which utilizes components of the SCR-522 airborne VHF command set and necessary auxiliary equipment for use as a ground station. It is especially designed for transportation by air with the major components contained in two foot-locker chests.

It is intended for use at advance landing fields to provide ground-air communications with aircraft equipped with SCR-522; the equipment may also be used to some extent for point-to-point communication on the ground. The SCR-522 four-channel crystal controlled transmitter and receiver is used in this equipment with the d.c. dynamotor unit replaced by a special a.c. rectifier, RA-62-C, operating from the gasoline engine-driven power unit PE-75-D. When available, a commercial 100-130 volt or 230-260 volt, 40 to 60 cycles, single phase power source can be used.

Remote control facilities except "on-off" switching are provided for operation up to a maximum of 500 feet. Remote send-receive operation is possible up to two miles where field or open wire lines are available. Channel selection is accomplished at the transmitter-receiver chest or at the remote control station up to 500 feet away.

Loudspeaker LS-10 is a part of this radio set. While the loudspeaker may not be required under certain conditions, it is particularly useful in tower control work.

Radio Set SCR-624-B is the same as SCR-624-A

except CH-170 has been eliminated, and its contents have been placed in Chest CH-172-B and Chest CH-173-B.

Test Equipment required for the maintenance and tuning of SCR-624 includes Test Equipment IE-19 or Test Set I-139-A.

Army Supply Program requirements as of 1 December 1944 were 5,068 for the calendar year 1944 and 988 for 1945.

POWER INPUT	165 WATTS @ 110 VOLTS
POWER OUTPUT	8 TO 10 WATTS (max.)
FREQUENCY	100-156 MC
TYPE OF SIGNAL	AM-VOICE ON 4 PRE-SET CRYSTAL FREQUENCIES
RANGE	LINE OF SIGHT TO 100

TUBE COMPLEMENT			
NO.	TYPE	NO.	TYPE
2	832	2	12AH7GT
4	12A6	3	12SG7
1	6G6G	1	12H6
1	12C8	1	6SS7
1	9002	1	6X5GT/G
3	9003	2	5U4G



Radio Set SCR-624 provides an easily assembled short range ground - to air command communications facility for use at newly established landing strips and on captured enemy air fields.



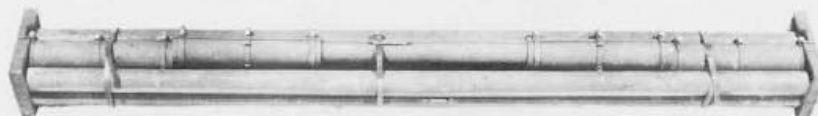
Chest CH-173-B  
(Interior View Showing Equipment in Place,  
Except Control Boxes).



Chest CH-172-A  
Completely Packed

Control Box  
BC-1313

Control Box  
BC-1314



Antenna Mast MA-7-A  
Crated for Shipment

## RADIO SET SCR-624

TOTAL WEIGHT 500 LBS.

Component	Nomenclature	Size	Weight
Radio Transmitter	BC-625-AM		
Radio Receiver	BC-624-C		
Rack	FT-244-A		
Case	CS-80-C		
Mounting	FT-488		
Control Box	BC-1313		
Control Box	BC-1312		
Chest	CH-172-B	17" x 18" x 35"	205 Lbs.
Chest	CH-183-B	17" x 18" x 35"	124 Lbs.
Antenna	AN/94-C		
Mast	MA-7-A		152 Lbs.
Loudspeaker	LS-10-A		
Power Unit	PE-75-D		
Rectifier	RA-62-C		

and includes cords, set of metal stakes, kit of tools and spare tube boxes.  
Weight of chests include weight of components packed in each.

March 1945