



VOA Site C Proposal 2021

The Brightleaf Amateur Radio Club in Greenville, NC has been selected by Voice Of America to be one of the three special event stations given the honor to celebrate the 80th anniversary of the first transmission from the VOA.

In honor of this special event on February 19-20, 2022, our Club thought it would be fitting to use the four approximately 1000' rhombic antennas that still remain at VOA Site C outside Greenville for this celebration of the VOA. The site has been decommissioned since the 1980's and now East Carolina University (ECU) is in control of the site. The club has for decades run temporary ladder line feeds to the rhombic antennas for all kinds of special events at our cost. Recently however, these feed lines were torn down by maintenance crews on the site, and some of the telephone poles supporting the feed lines have been removed. We need to repair the lines and bring them back to the building by planting new telephone poles to get the lines high enough to avoid damage by passing equipment. We have the maintenance crew from nearby VOA Sites A & B ready to come to VOA Site C to repair the antennas and replace the poles, but we have no funding for this venture.

Restoring the antennas on VOA Site C could then provide a facility that would serve as much more than just an occasional special event station. The four rhombic antennas and two rotatable log periodic antennas could be reconnected to the building and set up a permanent Amateur Radio Station that could reach out and touch most of the world. During hurricanes and other natural disasters, it could be an emergency communication hub. It could also be a remote station for those that cannot have antennas due to HOA's or other reasons. There is a 100' tower that could be used for digital modes extending over the entire region. There is high speed internet to the building already. The potential of the site to enhance community oriented amateur radio activities is extremely large. It would be a waste to allow all of this potential to rot away unused.

To this end we are meeting with ECU and the managers from our local VOA to evaluate what it would take to do the repairs, then obtain an estimate of the cost of the repairs. Once that is done, then a specific plan to turn this site into a world class amateur radio station will follow. We are planning to apply for grants to be able to save this historic equipment to its full potential for use into the future.

As background information, the Brightleaf Amateur Radio Club was founded in 1967 and has been continuously active since then. We are a 501(c)(3) organization and currently I am the president for 2021 & 2022. Visit our club web page (<https://w4amc.com>) to see the kinds of activities we have been supporting. We are involved with education of over 100 marines at Cherry Point to get their amateur radio licenses in the last two years. This is seen as a necessary skill for their communication specialists.



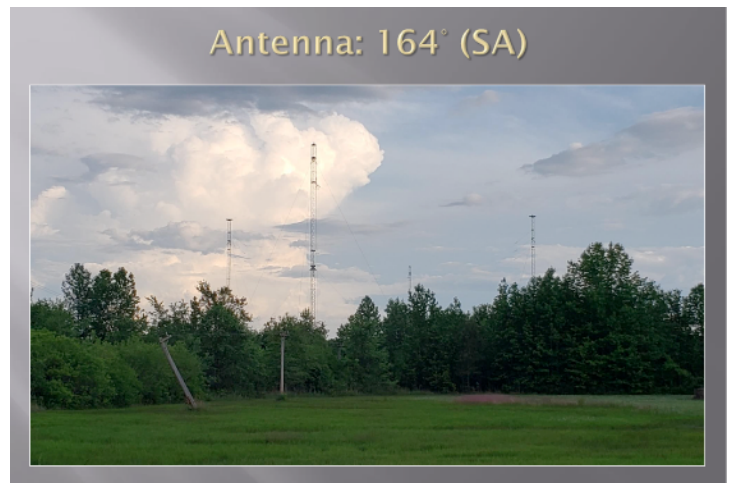
In 2000 our club and ECU used these VOA antennas to participate in RIMPAC exercise to provide medical support to the armed forces camp in Hawaii (<http://archives.starbulletin.com/2000/06/15/news/story2.html>).

I look forward to any help and advice you can offer to get this project off the ground.

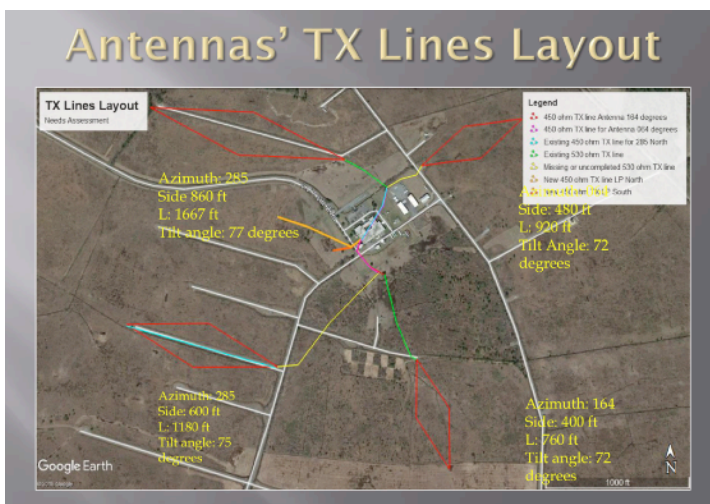
Sincerely, Peter Van Houten, MD. (252-412-8115, peter.vanhouten@me.com)



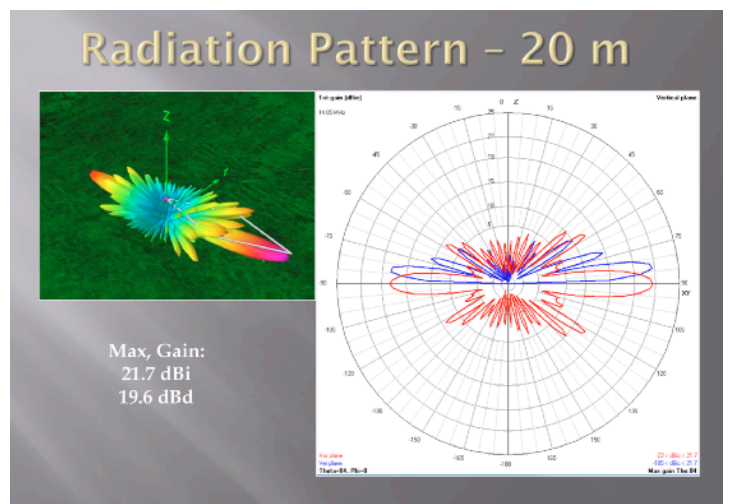
Rotatable Log Periodic



Rhombic to South America



Facility Layout with Antennas and feed lines.
Most feed lines are now damaged.



Rhombic to South America Radiation pattern on 20M



Antenna	Original TX lines		Run to Building	Status	Observations
	Length (ft)	Status	450 Ω line needs (ft)		
285 North	405	Working	480	Installed	Vegetation trimming.
285 South	150	Partially lost	340	Not installed	Heavy Vegetation Trimming. Wire reinstalled. Insulators Replacement.
64	350	One wire lost	500	Not installed	Borrow wire and insulators from line under 285 South (1170 ft long).
164	670	Working	500	Not installed	Vegetation trimming. One post inclined 45 deg
LP North	N/A	Severed	740	Not installed	Vegetation trimming. Supports.
LP South	N/A	Severed	250	Not installed	Vegetation trimming. Supports.
		Total feet Needed of 450 Ω line for rhombics 064 and 164	1000		
		Total feet Needed of 450 Ω line for rhombics not connected (3)	1340		
		Total, including LPs	2330		

Situation prior to removal of working feed lines.
 None of the antennas are now connected.