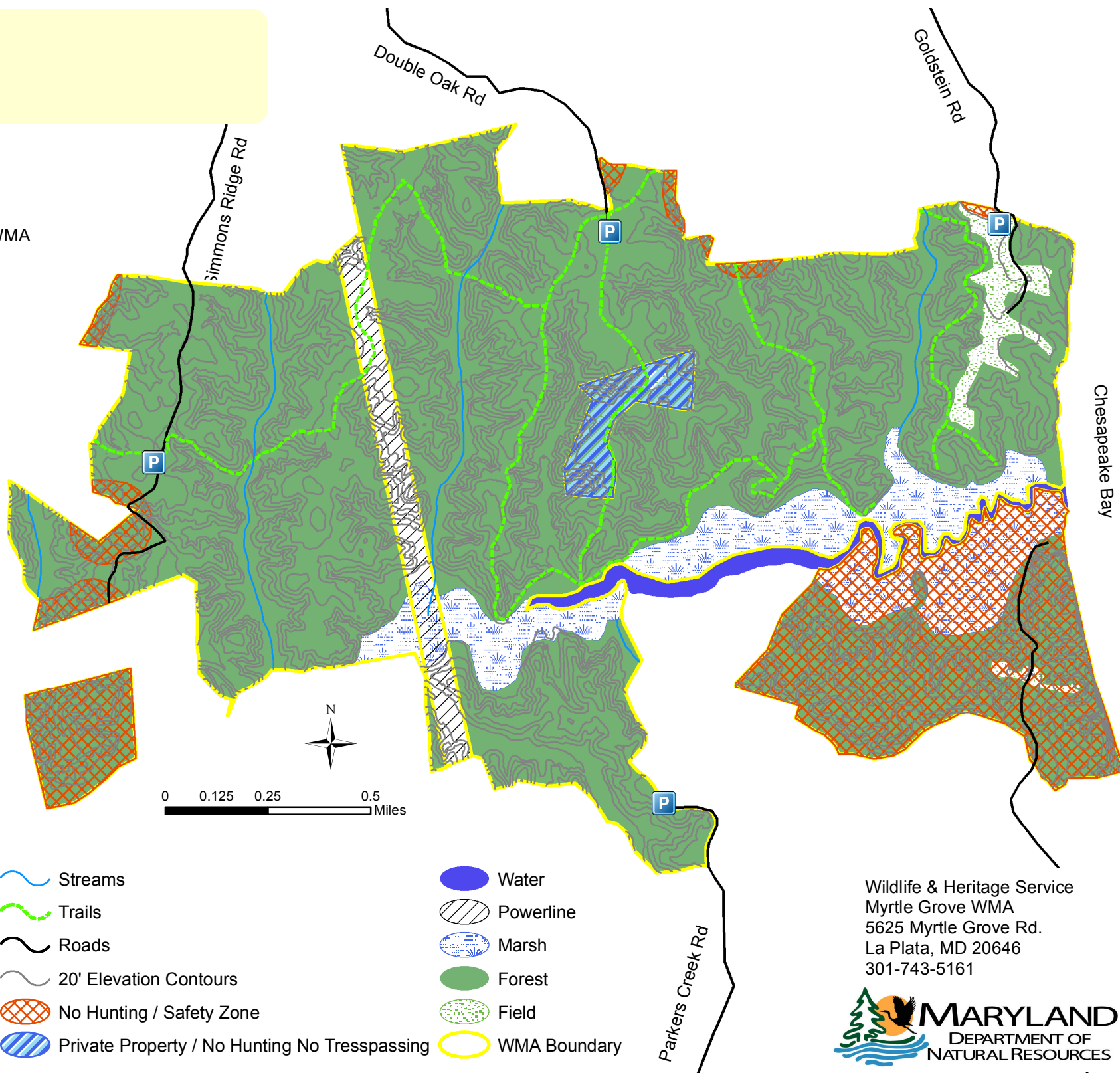


Location of Parkers Creek WMA within Calvert County



- | | |
|----------------------------------------------|--------------|
| Streams | Water |
| Trails | Powerline |
| Roads | Marsh |
| 20' Elevation Contours | Forest |
| No Hunting / Safety Zone | Field |
| Private Property / No Hunting No Trespassing | WMA Boundary |

Wildlife & Heritage Service
Myrtle Grove WMA
5625 Myrtle Grove Rd.
La Plata, MD 20646
301-743-5161

