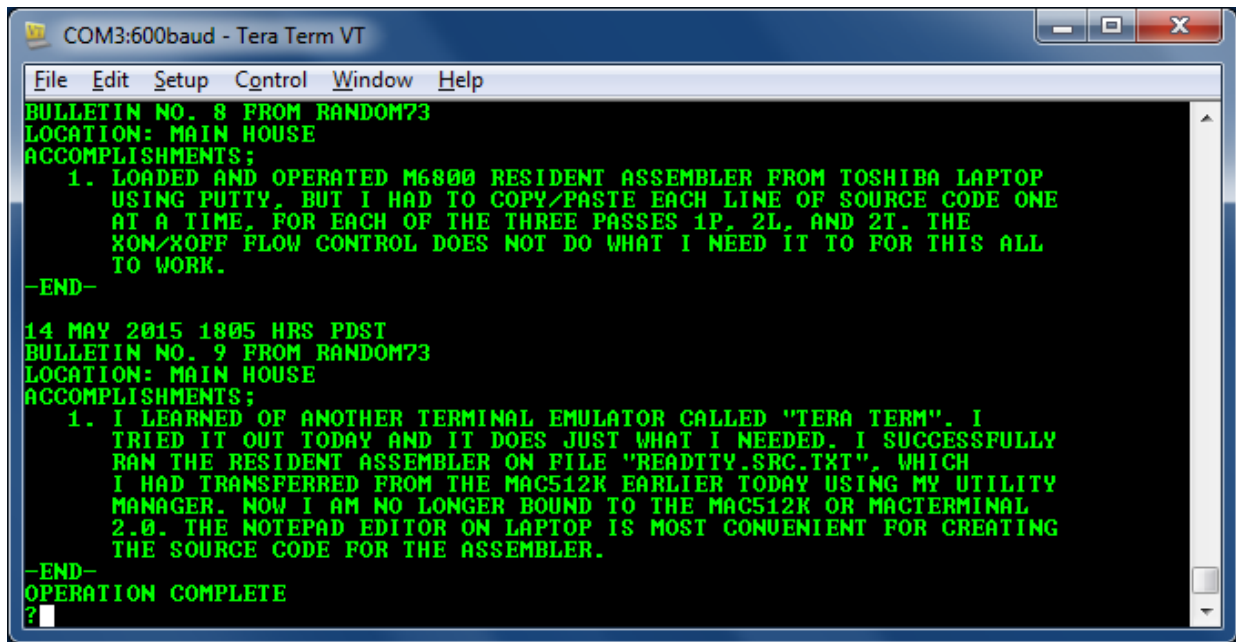
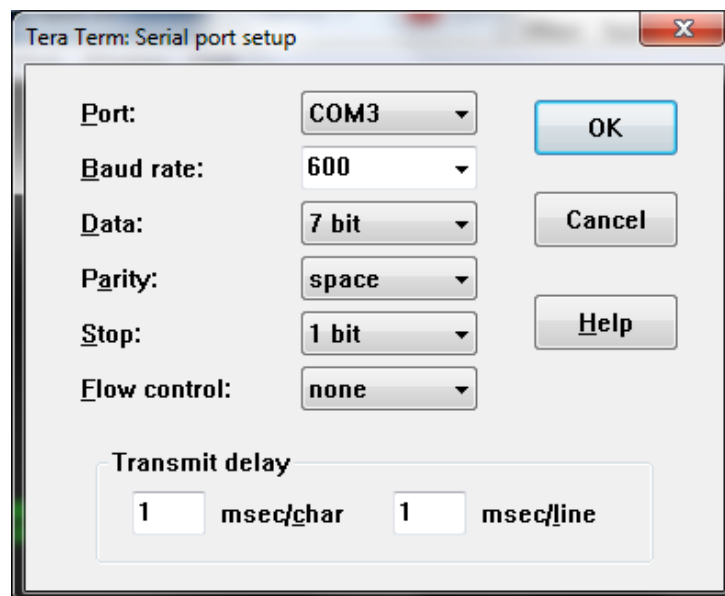


Using Tera Term with My MC6800/MIKBUG Microcomputer.



With Tera Term, and a TRENDnet TU-S9 USB-to-serial converter, I can use our Windows 7 laptop to operate not only my old microcomputer, but also the paper-tape based M6800 Resident Assembler, MP-E, that I purchased in 1977 from Southwest Technical Products, Inc. (SWTPC). The great thing is that I do not have to use paper tape.

I discovered that serial port character delay =0 and line delay =0 caused occasional transmission errors when sending a text file to my microcomputer. Serial port character delay =1 and line delay =1 seems to solve the problem; This is the setup I saved as TERATERM6800.INI. Use the "Restore Setup..." command to select it;

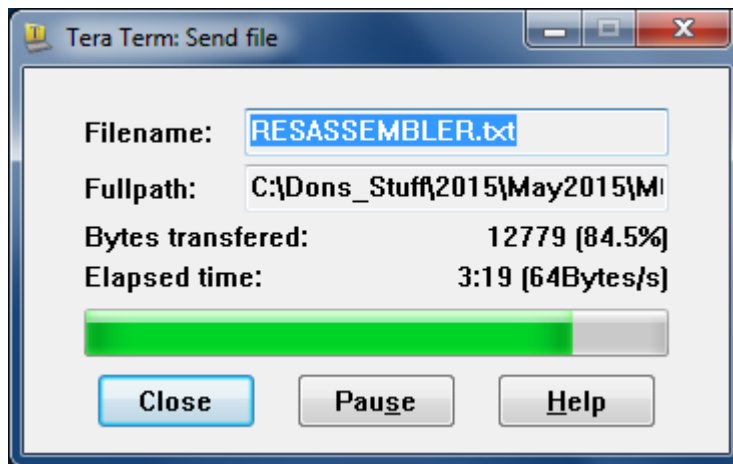


These settings work fine for uploading text to UTMGR3 and for loading MIKBUG-formatted object code using the "L" command. However, to run the Resident Assembler the delay between lines must be much greater, unless I can figure out how to get the Xon/Xoff flow control method to work. My present guidelines are as follows;

Delay after each line;

|  |             |
|--|-------------|
| 1P, 1st pass if there might be errors;         | = 1500 msec |
| 1P, 1st pass if you know there are no errors;  | = 500 msec  |
| 2L, 2nd pass listing if there might be errors; | = 3000 msec |
| 2T, 2nd pass tape if no errors;                | = 3000 msec |

I determined that if the "Send File..." binary option is checked, then Tera Term sends both <CR> and <LF>. But my program UTMGR3 Command 1 assumes that only <CR> is sent, and inserts a <LF> after it. This causes two <LF>s to be in the text buffer. When I uncheck the binary option there is only one <LF> in the text buffer. It can only be the one that UTMGR3 inserted, so this means that Tera Term stripped out the <LF> that was in the .txt file. The Tera Term Help file did not help to explain this. Instead, it adds confusion.



The "Send file..." progress window closes before the 600 baud rate transmission to the microcomputer has completed. When sending text to Utility Manager, I can type Ctrl-D anytime after the window closes and the Ctrl-D is appended to the transmission. If I type Ctrl-D before the progress window closes, then it is not appended to the transmission.

It is not necessary to send Ctrl-D to MIKBUG or to the Resident Assembler.