



ARC WINTER FIELD DAY OPERATIONS SHEET



Overview

The Alexandria Radio Club will be conducting the **2026 Winter Field Day** at Alexandria Fire Station 210. Operations will start at 11:00am Saturday, January 24, proceed overnight, and into the afternoon on Sunday January 25. Operations will end when operators run out of energy or at 4:59pm, whichever occurs first.

The event will include two HF stations, a SATCOM/VHF/UHF station, digital modes, CW, a Winlink FM station, an ARES equipment demo and practical exercise, an amateur radio exam, and informal antenna building sessions. We will be attempting to operate on alternative power the entire event. This will be a fun event to practice the art of science of radio with a emergency communications focus!

Learn more about Winter Field Day at: <https://winterfieldday.org/index.php>

General Operations

There will be multiple HF and VHF/UHF stations set up for the event, but only two stations may operate at any given time. This is a self-imposed limit based on our expected demand for operators. This will be confirmed a few days before the event. The planned exchange for the event is: **W4HFH 2I VA**

Operators need to take particular care to deconflict their operations with each other and use the provided band pass filters, as applicable, to prevent equipment damage.

The only set times for events are the 11:00am start Saturday, fixed satellite pass opportunities, WFD Bulletins, and the amateur radio exam at 12:00pm Sunday. See the Detailed Event Timeline for more information and the exam registration link. Even if you don't plan to attend Winter Field Day you can still help us with VHF/UHF QSOs to the station. We will have capability beyond traditional 2 meter/70cm, and can provide loaner mobile transceivers.

The ARES Demo, Winlink FM Demo, and antennas builds will be informal rolling events. Once on-site, find Joe Kafka, KD2HZG, for ARES and antenna projects. Find Gary Sessums, KC5QCN, for Winlink FM.

We will be operating at a city facility that will be conducting normal operations and training. Please respect the privilege we are being afforded to use this location.

Logistics

Equipment: the planning committee is providing the baseline radio and support equipment. There will be a Elecraft K3 and a Yaesu FT-891 at the two HF stations. Feel free to bring your own rig, computer, battery, etc. if you want operate your own gear. This is a great opportunity to see if you can relocate and integrate into an emergency communications operation.

Food and Drink: coffee will be provided, but there is no formal meal plan. On-site folks will coordinate as needed for dinner Saturday (e.g. pizza). Providing your own snacks and drinks is recommended just in case.

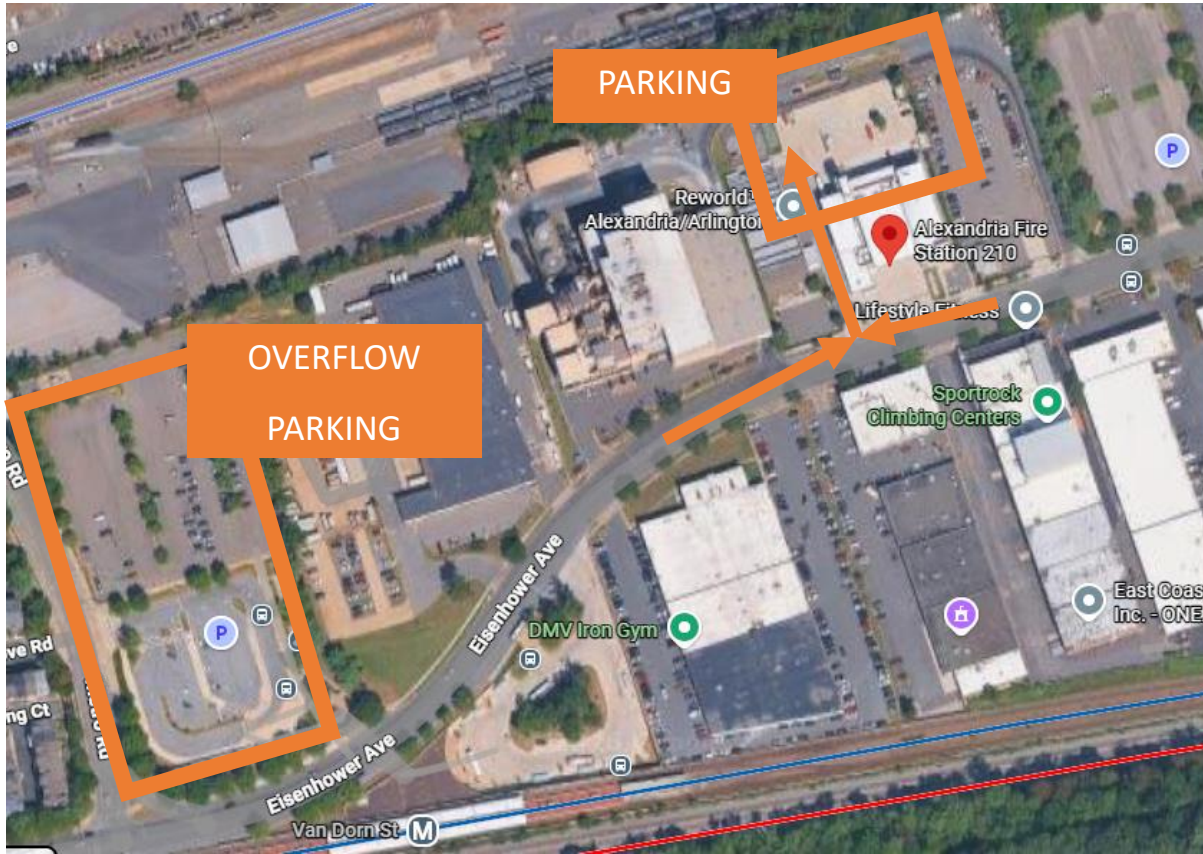
Parking: Alexandria Fire Station 210, 5255 Eisenhower Ave, Alexandria, VA 22304. Take the alley to the left (west) of the fire station and park in the back lot. **Ignore** the DO NOT ENTER sign. Only parked in marked spots.



ARC WINTER FIELD DAY OPERATIONS SHEET



Do not park in front of the fire station or enter from the front. Overflow parking is at the Eisenhower Metro parking, which is free on the weekend.





ARC WINTER FIELD DAY OPERATIONS SHEET



Logging: we will be logging with N3FJP software using pre-configured laptops. These computers will connect to a central server to help make log collection easier. If you want to use your own laptop, please download N3FJP prior to arrival. The W4HFH login and network details will be provided on-site. Paper logs are still fine if you want to hand jam your QSOs.

Digital Modes: at least one HF station, hopefully both, will be loaded with digital mode software (e.g. JS8Call, Winlink) for the two HF radios. If you want to bring your own computer you should have your desired software installed prior to arrival. Winter Field Day has specific events for CW, Winlink, and PSK31. JS8Call and VARA AC are also being promoted during this event. WSJT-X modes (FT8, FT4) are not allowed.

Detailed Event Timeline

FREE Winter Field Day Exam Session (Laurel Amateur Radio Club, Inc.) at 12:00pm Sunday. Registration link:

<https://hamstudy.org/sessions/69436c5e55053eb02a711be7/1>

The following schedule is a list of opportunities! If there is a specific activity you want to do at a specific time, please contact Skip, KO2THF.

Saturday, January 24th		
0900	Final Equipment Set Up and Testing	
	Winter Field Day Bulletin (HF) (frequency plan at end of document)	SATCOM/VHF/UHF <i>Coord w/ other VHF/UHF Stations</i>
1100	Start Operations	
1130	Ireland: SSB	
1200	Ireland: BPSK31	VHF/UHF/GHz Check-ins
1148-1156		SO-124 (FM)
1230	Ireland: SSB	
1300	US: CW	VHF/UHF/GHz Check-ins
1315	US: SSB	
1313 – 1323		ISS (FM)
1330	US: PSK31 Ireland: SSB	
1400	Ireland: BPSK31	VHF/UHF/GHz Check-ins
1450 – 1500		ISS (FM)
1500		VHF/UHF/GHz Check-ins
1501 - 1513		AO-73 (SSB)
1502 – 1513		SONATE-2 (APRS)
1543 – 1547		SO-50 (FM)
1600	Ireland: SSB	VHF/UHF/GHz Check-ins
1628 – 1649		AO-7 (SSB)
1628 - 1637		ISS (FM)
1630	Ireland: BPSK31	
1700	Ireland: SSB	VHF/UHF/GHz Check-ins



ARC WINTER FIELD DAY OPERATIONS SHEET



1723 – 1736		SO-50 (FM)
1730	Ireland: BPSK31	
1800		VHF/UHF/GHz Check-ins
1806 – 1815		ISS (FM)
1820 – 1842		AO-7 (SSB)
1830 – 1842		PO-101 (FM)
1900	US: CW	VHF/UHF/GHz Check-ins
1915	US: SSB	
1923-1940		RS-44 (SSB)
1930	US: PSK31	
1945 – 1951		ISS (FM)
2000		VHF/UHF/GHz Check-ins
2010-2025		FO-29 (SSB)
2014-2024		AO-123 (FM)
2014-2024		JO-97 (SSB)
2110-2121		AO-91 (FM)
2114 – 2135		RS-44 (SSB)
2120 – 2130		ISS (FM)
2147 – 2158		JO-97 (SSB)
2147 – 2158		AO-123 (FM)
2156 – 2210		FO-29 (SSB)
2311 – 2327		SO-124 (FM)
2329 – 2338		SO-124 (FM)

Sunday, January 25th		
	Winter Field Day Bulletin (HF) Frequency plan follows this table	SATCOM/VHF/UHF
		<i>Coord between VHF/UHF</i>
0516 – 0528		PO-101 (FM)
0623 – 0636		AO-7 (SSB)
0700	Ireland: SSB	
0708 – 0727		RS-44 (SSB)
0730	Ireland: BPSK31	
0731 – 0745		SO-50 (FM)
0800	Ireland: SSB	
0901 – 0921		RS-44 (SSB)
0930	Ireland: BPSK31	
1202 – 1211		SO-124 (FM)
1225 – 1235		ISS (FM)
1404 – 1410		ISS (FM)
1430	Ireland: SSB	
1500	Ireland: BPSK31	



ARC WINTER FIELD DAY OPERATIONS SHEET



1530	Ireland: SSB	
1455 – 1507		AO-73 (FM)
1600	Ireland: BPSK31	

UNITED STATES

(All times are UTC)

24 January 2026		
1800	1815	1830
CW	SSB	PSK31
Frequency	Frequency	Frequency
N/A	28.590	28.120
21.050	21.390	21.070
18.0775	N/A	N/A
14.050	14.290	14.070
7.050	7.290	7.040
3.550	N/A	N/A



25 January 2026		
0000	0015	0030
CW	SSB	PSK31
Frequency	Frequency	Frequency
N/A	28.590	28.120
21.050	21.390	21.070
18.0775	N/A	N/A
14.050	14.290	14.070
7.050	7.290	7.040
3.550	N/A	N/A

IRELAND

(All times are UTC)

24 January 2026			
SSB		BPSK31	
Time	Frequency	Time	Frequency
1630	28.400	1700	28.120
1730	21.160	1800	21.070
1830	14.200	1900	14.070
2100	7.130	2130	7.040
2200	3.660	2230	3.580



25 January 2026			
SSB		BPSK31	
Time	Frequency	Time	Frequency
1200	28.400	1230	28.120
1300	21.160	1330	21.070
1400	14.200	1430	14.070
1930	7.130	2000	7.040
2030	3.660	2100	3.580