

Alexandria Radio Club Winter Field Day 2023



January 28-29, 2023
Alexandria Fire Station 210
5255 Eisenhower Avenue
Alexandria, Virginia

Overview

- What is Winter Field Day?
- ARC Field Day Objectives
- Special Credits and Use of Facility
- Hours/Days of Operation
- Antennas and Power Considerations
- Schedule of On-air Operations
- WFD Rules
- WFD Take Down
- Volunteers Needed
- Preparation Next Steps

What is Winter Field Day?

Winter Field Day is a communications exercise held in the winter during the last weekend in January. Winter Field Day (WFD) is sponsored by the Winter Field Day Association (WFDA), and is recognized by the ARRL.



Similar to the ARRL Field Day, ham radio operators worldwide participate in Winter Field Day.

Winter Field Day (WFD) can be worked from the comfort of home; however, WFD was created with the idea that ham radio operators should practice portable emergency communications in winter environments.



Rules and information:
<https://winterfieldday.com>

Alexandria Radio Club Objectives

The primary objective is to use WFD as a vehicle to demonstrate Alexandria Radio Club (ARC) readiness and capabilities to deploy communications capabilities during emergencies.



- **Provide an opportunity for ARC members to show they can deploy with their HF/VHF go-boxes in case of emergencies or disasters**
- **Provide a training opportunity for ARC members to learn “how-to’s” concerning building and using HF go-boxes. New hams can learn what should be included in a “go box” kit and other important considerations.**
- **Develop better understanding about how to deploy and use potential City facilities that may be needed during future emergency deployments.**
- **Provide opportunities to demonstrate HF/VHF proficiency and use of Winlink for radio generated emails**
- **Provide an opportunity to develop more confidence in ARC ARES deployment capabilities**

Special Credits

- **Rick Bunn (N4ASX) – Requested City a facility from Alexandria Emergency Operations Center (EOC) for WFD**
- **Kevin Coleman (Office of Emergency Management) -- Approved and Coordinated use of Fire Station 210**
- **Joe Porcelli (KT3I) – Guided tour of Station 210 for site survey**



Alexandria Fire Station 210, 5255 Eisenhower Avenue

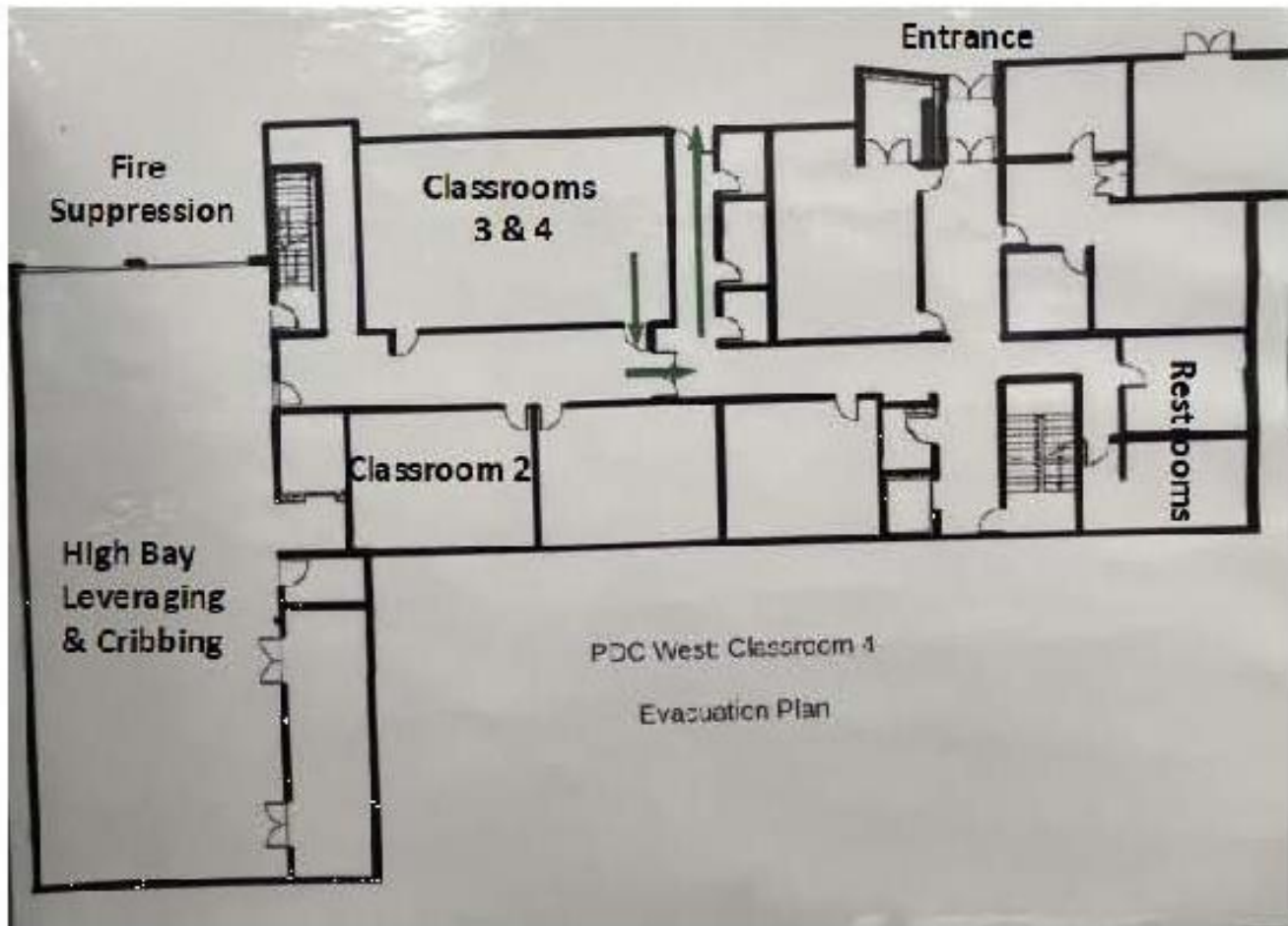
Parking

Parking is available in the back. Please, only park in assigned spaces and do not block any fire apparatus or the bay doors.

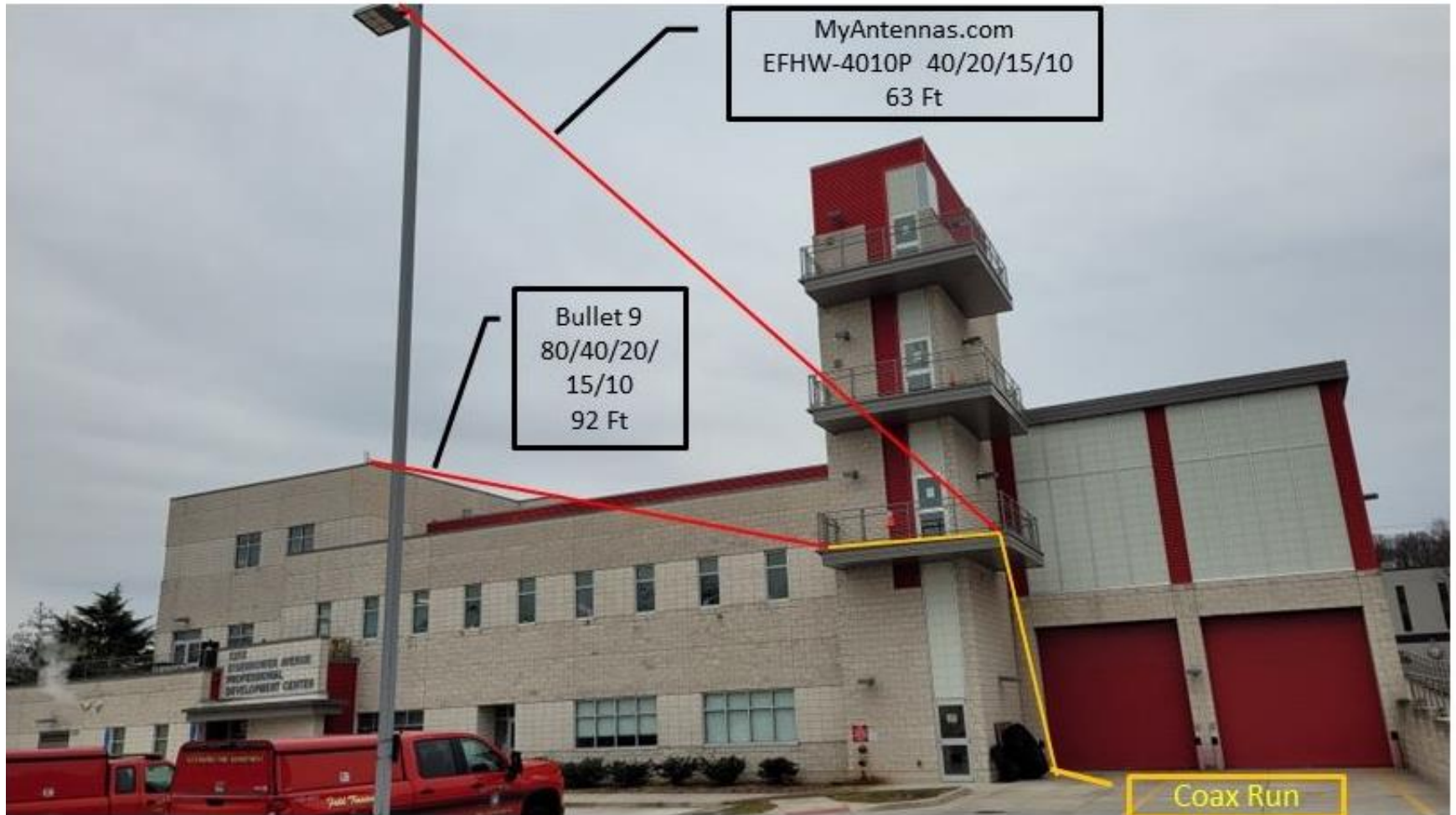


Building Access

The building can be accessed from the rear parking lot. Proceed down the hallway and turn right (before reaching the elevators) and classrooms 3 & 4 or on the right.



Winter Field Day Antennas (View from Building Rear)

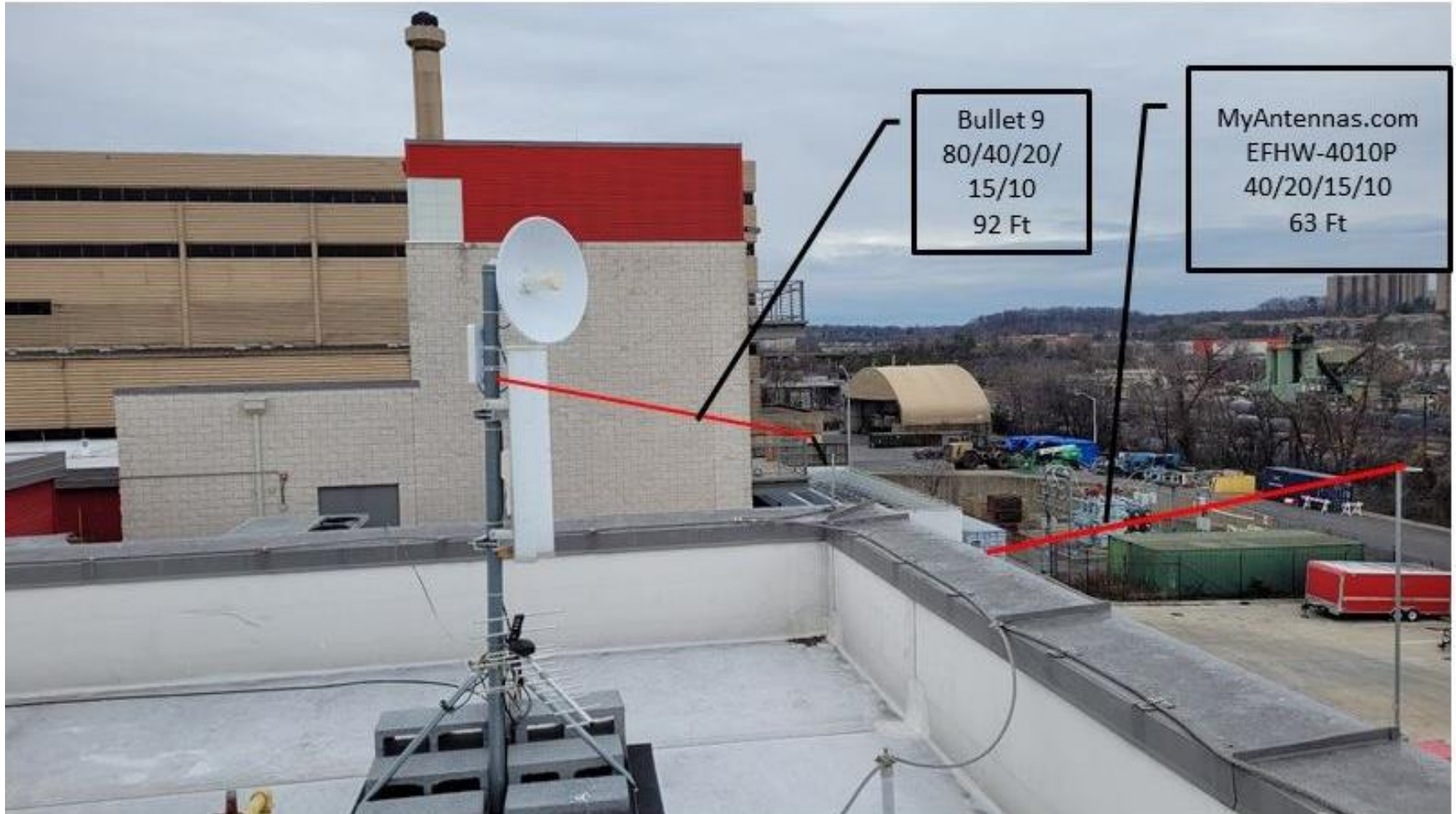


MyAntennas.com
EFHW-4010P 40/20/15/10
63 Ft

Bullet 9
80/40/20/
15/10
92 Ft

Coax Run

Winter Field Day Antennas (View from East Tower Roof)



Winter Field Day Power

Two (2 ea.) Lithium 138Ah Batteries with Generator Backup

Valence U27-12XP (2)



Hours/Days of Operation

- **Friday PM on January 27 2023 -- Antenna/Power Set Up**
- **2:00 p.m. to 5:00 p.m. on Saturday, January 28th.**
- **5:00 p.m. to 8:00 p.m. on Saturday, January 28th.**
- **8:00 a.m. to 11:00 a.m. on Sunday, January 29th**
- **1100 a.m. to 1:59 p.m. on Sunday, January 29th**
- **2:00 p.m. to 4:00 p.m. on Sunday January 29th – Remove antennas and Radio Station Equipment; and Clean up facility**

Club personnel with their go-kits and other participants should report to Station 210 one hour before their assigned 3-hour period to allow sufficient time for configuring radio equipment to work with antennas and power available.

Winter Field Day 2023

Radio Operations

W4HFH (2I VA)

**KA4FGY – CLUB TRUSTEE (EXTRA CLASS
LICENSE)**

**STATIONS MAY OPERATE AT THE HIGHEST
CLASS LEVEL AT TRANSMITTERS**

Winter Field Day Rules

- **Entry Categories:**
- **H = Home:** is defined as any station participating from their permanent livable residence or within 500ft of their Home regardless of operating inside or outside.
- **I = Indoor:** is defined as any station operating away from Home but from inside an insulated, weather-protected building or structure on a permanent foundation. Indoor stations typically have plumbing, heating/cooling, and running water. Church, EOCs, a club shack, a cabin, and community centers are all examples that would be Indoor.
- **O = Outdoor:** Outdoor stations are defined as operating from a partly or fully exposed building or shelter that does not typically have plumbing, heating/cooling, or running water available.
- **M = Mobile / Mobile Stationary:**
- **Entry Class:** Entry class is a number designated by the number of stations in your entry that are capable of simultaneous transmission.

W4HFH Will Operate as "2I"

Winter Field Day Rules

- **Exchange:** WFD exchange is call sign, Class and Category, plus location identifier. **W4HFH Will Operate as "2I VA"**
- **Bands:** All Amateur bands except 12, 17, 30, and 60 meters.
- **Modes:** CW, Phone (includes SSB, AM, FM, DMR, C4FM, etc.), and Digital (includes PSK, RTTY, Olivia, Packet, SSTV, ATV, JS8Call)
- **QSO Points:** Phone contacts count as one point each, and all CW & Digital modes count as 2 points each.
- **Power Output Multipliers:** The maximum permitted is 100 watts measured from the output of the final amplifier. QRP stations, as defined by transmitting less than 5 watts on CW or 10 watts on phone get a multiplier of 2. All other stations have a multiplier of 1.
- **Band Multipliers:** Each mode worked on each band counts as 1 multiplier.
- **Calculating Points:** Scores are based on the total number of QSO points x Power Output Multiplier x Band / Mode Multiplier + Bonus Points.
- **Total Score = (# of QSOs x POM x BM) + Total Bonus Points**

Winter Field Day Rules

- **Exchange:** WFD exchange is call sign, Class and Category, plus location identifier. **W4HFH Will Operate as "2I VA"**
- **Bands:** All Amateur bands except 12, 17, 30, and 60 meters.
- **Modes:** CW, Phone (includes SSB, AM, FM, DMR, C4FM, etc.), and Digital (includes PSK, RTTY, Olivia, Packet, SSTV, ATV, JS8Call)
- **QSO Points:** Phone contacts count as one point each, and all CW & Digital modes count as 2 points each.
- **Power Output Multipliers:** The maximum permitted is 100 watts measured from the output of the final amplifier. QRP stations, as defined by transmitting less than 5 watts on CW or 10 watts on phone get a multiplier of 2. All other stations have a multiplier of 1.
- **Band Multipliers:** Each mode worked on each band counts as 1 multiplier.
- **Calculating Points:** Scores are based on the total number of QSO points x Power Output Multiplier x Band / Mode Multiplier + Bonus Points.
- **Total Score = (# of QSOs x POM x BM) + Total Bonus Points**

Winter Field Day Rules

Bonus points:

- **Alternative Power1:** You may claim 500 points if no commercial power is used in powering your WFD station.
- **Outdoor:** You may claim 500 points if you are operating outdoors. Any station that is operating in the Home category but chooses to set up outdoors, may also claim this bonus.
- **Away from Home:** You may claim 500 points if you are operating in a location other than home as defined above.
- **Antenna:** You may claim 500 points if you are setting up an antenna(s) just for WFD.
-
- **Satellite:** You may claim 500 points for making at least one successful satellite QSO.
- **Mobile:** You may claim 250 points if you are mobile during the event.
- **To claim any bonus points, all stations covered in your entry must qualify.**

Field Day Take Down

- **Save Logging Data w/backup**
- **Disconnect all power sources**
- **Take down radios etc.**
- **Take down antennas**
- **Clean up area**

Winter Field Day Volunteers Needed

WINTER FIELD DAY VOLUNTEERS

Location: Alexandria Fire Station 210

Time Slots

Saturday January 28th

TIME	40 meter Station Operator	20 meter Station Operator	Station Participant	Station Participant	Notes
2-5 PM					
5-8 PM					

Sunday January 29th

8-11AM					
11AM - 1:59 PM					

WFD Preparation Next Steps

Prior to Field Day Checklist:

- **Purchase/Acquire/Configure/Test N3FJP Logging Software**
- **Configure CAT interface for automatic band/mode logging**
- **If using N3FJP, configure Web Upload Contest Status**
- **Create a Discord account**
- **Click the special link to gain access to the WA6MPR server**
- **Explore WA6MPR Chat Room**
- **Read the Winter Field Day rules at www.WinterFieldDay.com**
- **Determine the location where you will operate from**
- **Decide on your Category (Home, Indoor, Outdoors, Mobile) if operating on an individual basis.**
- **Decide your "Class" for the event (number of simultaneous transmitters)**
- **Decide how/where to install your antenna(s)**
- **Check your antenna(s)**
- **Get your station ready (including power source)**
- **Brush up on your Field Day operating techniques per mode**

WFD Preparation Next Steps

Final Checks Virtual Meeting via Zoom

January 25th, 7:00 p.m.

Comments or Questions?